

## GALC Antibody

Catalog No: #37586

Orders: order@signalwayantibody.com

Support: tech@signalwayantibody.com

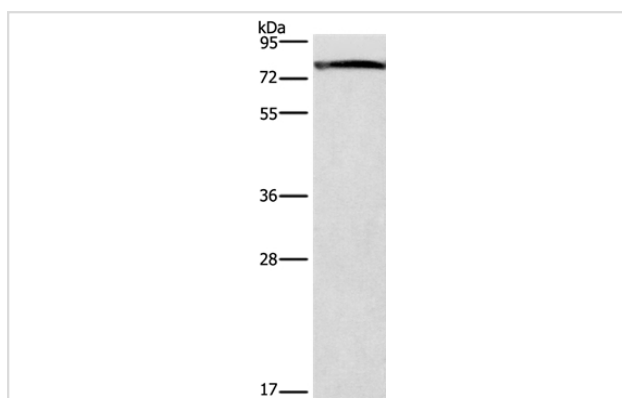
## Description

Product Name	GALC Antibody
Host Species	Rabbit
Clonality	Polyclonal
Purification	Antigen affinity purification.
Applications	WB
Species Reactivity	Hu Ms
Specificity	The antibody detects endogenous levels of total GALC protein.
Immunogen Type	Peptide
Immunogen Description	Synthetic peptide corresponding to a region derived from internal residues of human galactosylceramidase
Target Name	GALC
Other Names	Galactocerebrosidase; Galactosylceramidase; galactosylceraminidase; GALC; GALCERase
Accession No.	Swiss-Prot#: P54803NCBI Gene ID: 2581Gene Accssion: NP_000144
Uniprot	P54803
GeneID	2581;
SDS-PAGE MW	77kd
Concentration	1.2mg/ml
Formulation	Rabbit IgG in pH7.4 PBS, 0.05% NaN <sub>3</sub> , 40% Glycerol.
Storage	Store at -20°C

## Application Details

Western blotting: 1:200-1:1000

## Images



Gel: 8%SDS-PAGE  
 Lysates (from left to right): Mouse brain tissue  
 Amount of lysate: 40ug per lane  
 Primary antibody: 1/300 dilution  
 Secondary antibody dilution: 1/8000  
 Exposure time: 1 minute

## Background

This gene encodes a lysosomal protein which hydrolyzes the galactose ester bonds of galactosylceramide, galactosylsphingosine, lactosylceramide, and monogalactosyldiglyceride. Mutations in this gene have been associated with Krabbe disease, also known as globoid cell leukodystrophy.

Alternate transcriptional splice variants, encoding different isoforms, have been characterized.

---

Note: This product is for in vitro research use only