

## GCSAM Antibody

Catalog No: #37588

Orders: [order@signalwayantibody.com](mailto:order@signalwayantibody.com)Support: [tech@signalwayantibody.com](mailto:tech@signalwayantibody.com)

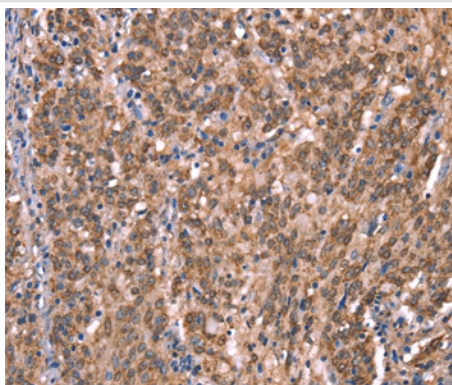
## Description

|                       |  |
|-----------------------|--|
| Product Name          | GCSAM Antibody   |
| Host Species          | Rabbit   |
| Clonality             | Polyclonal   |
| Purification          | Antigen affinity purification.   |
| Applications          | IHC  |
| Species Reactivity    | Hu   |
| Specificity           | The antibody detects endogenous levels of total GCSAM protein.   |
| Immunogen Type        | Peptide  |
| Immunogen Description | Synthetic peptide corresponding to a region derived from internal residues of human germinal center-associated, signaling and motility |
| Target Name           | GCSAM  |
| Other Names           | HGAL; GCAT2; GCET2   |
| Accession No.         | Swiss-Prot#: Q8N6F7NCBI Gene ID: 257144Gene Accssion: NP_689998  |
| Uniprot               | Q8N6F7   |
| GeneID                | 257144;  |
| Concentration         | 2.7mg/ml   |
| Formulation           | Rabbit IgG in pH7.4 PBS, 0.05% NaN <sub>3</sub> , 40% Glycerol.  |
| Storage               | Store at -20°C   |

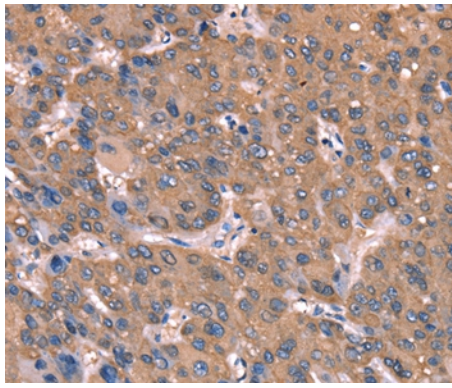
## Application Details

Immunohistochemistry: 1:50-1:200

## Images



Immunohistochemical analysis of paraffin-embedded Human gastric cancer tissue using #37588 at dilution 1/40.



Immunohistochemical analysis of paraffin-embedded Human liver cancer tissue using #37588 at dilution 1/40.

## Background

This gene encodes a protein which may function in signal transduction pathways and whose expression is elevated in germinal cell lymphomas. It contains a putative PDZ-interacting domain, an immunoreceptor tyrosine-based activation motif (ITAM), and two putative SH2 binding sites. In B cells, its expression is specifically induced by interleukin-4. Alternative splicing results in multiple transcript variants encoding different isoforms.?

Note: This product is for in vitro research use only