

## TUBGCP2 Antibody

Catalog No: #37589

Orders: [order@signalwayantibody.com](mailto:order@signalwayantibody.com)Support: [tech@signalwayantibody.com](mailto:tech@signalwayantibody.com)

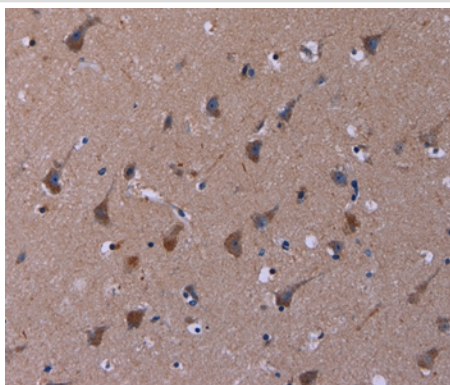
## Description

Product Name	TUBGCP2 Antibody
Host Species	Rabbit
Clonality	Polyclonal
Purification	Antigen affinity purification.
Applications	IHC
Species Reactivity	Hu
Specificity	The antibody detects endogenous levels of total TUBGCP2 protein.
Immunogen Type	Peptide
Immunogen Description	Synthetic peptide corresponding to a region derived from internal residues of human tubulin, gamma complex associated protein 2
Target Name	TUBGCP2
Other Names	GCP2; GCP-2; h103p; hGCP2; SPBC97; Spc97p; hSpc97; Grip103
Accession No.	Swiss-Prot#: Q9BSJ2NCBI Gene ID: 10844Gene Accssion: NP_001243546/Q9BSJ2
Uniprot	Q9BSJ2
GeneID	10844;
Concentration	2.8mg/ml
Formulation	Rabbit IgG in pH7.4 PBS, 0.05% NaN <sub>3</sub> , 40% Glycerol.
Storage	Store at -20°C

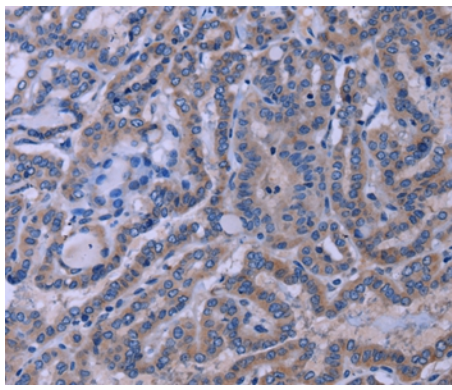
## Application Details

Immunohistochemistry: 1:50-1:200

## Images



Immunohistochemical analysis of paraffin-embedded Human brain tissue using #37589 at dilution 1/50.



Immunohistochemical analysis of paraffin-embedded Human thyroid cancer tissue using #37589 at dilution 1/50.

## Background

Gamma-tubulin complex component 2 is a protein that in humans is encoded by the TUBGCP2 gene. It is part of the gamma tubulin complex, which required for microtubule nucleation at the centrosome. Gamma-tubulin complex is necessary for microtubule nucleation at the centrosome. Gamma-tubulin complex is composed of gamma-tubulin, TUBGCP2, TUBGCP3, TUBGCP4, TUBGCP5 and TUBGCP6.

Note: This product is for in vitro research use only