

GPHN Antibody

Catalog No: #37590

Orders: order@signalwayantibody.comSupport: tech@signalwayantibody.com

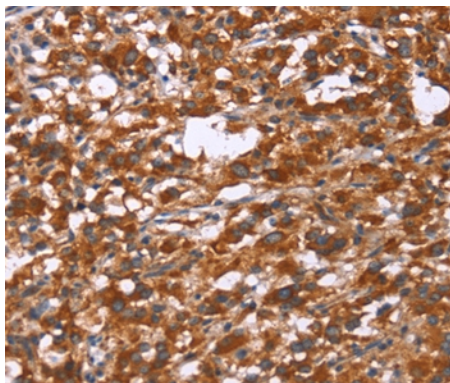
Description

Product Name	GPHN Antibody
Host Species	Rabbit
Clonality	Polyclonal
Purification	Antigen affinity purification.
Applications	IHC
Species Reactivity	Hu Ms Rt
Specificity	The antibody detects endogenous levels of total GPHN protein.
Immunogen Type	Peptide
Immunogen Description	Synthetic peptide corresponding to a region derived from internal residues of human gephyrin
Target Name	GPHN
Other Names	Geph
Accession No.	Swiss-Prot#: Q03555NCBI Gene ID: 64845Gene Accssion: NP_074056
Uniprot	Q03555
GeneID	64845;
Concentration	1.5mg/ml
Formulation	Rabbit IgG in pH7.4 PBS, 0.05% NaN ₃ , 40% Glycerol.
Storage	Store at -20°C

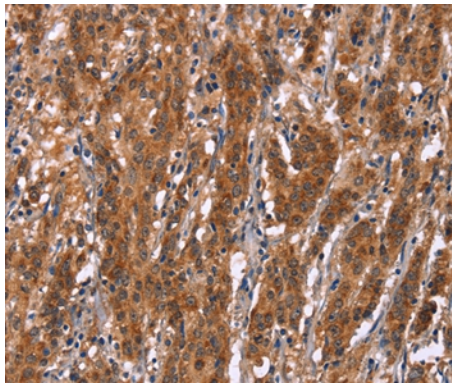
Application Details

Immunohistochemistry: 1:50-1:200

Images



Immunohistochemical analysis of paraffin-embedded Human thyroid cancer tissue using #37590 at dilution 1/30.



Immunohistochemical analysis of paraffin-embedded Human gastric cancer tissue using #37590 at dilution 1/30.

Background

Gephyrin is a microtubule-associated protein highly expressed in brain and localized to neuronal postsynaptic membranes. Gephyrin is essential for the postsynaptic localization of the inhibitory glycine receptor and is thought to anchor the receptor to subsynaptic microtubules. The protein is expressed in most mammalian tissues with predominant expression in brain. At least five additional splice variants of Gephyrin ranging in molecular weight have been identified in rat and human brain tissue.

Note: This product is for in vitro research use only