

KCNJ6 Antibody

Catalog No: #37593

Orders: order@signalwayantibody.comSupport: tech@signalwayantibody.com

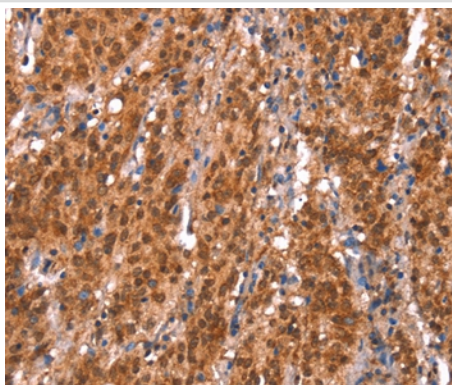
Description

Product Name	KCNJ6 Antibody
Host Species	Rabbit
Clonality	Polyclonal
Purification	Antigen affinity purification.
Applications	IHC
Species Reactivity	Hu
Specificity	The antibody detects endogenous levels of total KCNJ6 protein.
Immunogen Type	Peptide
Immunogen Description	Synthetic peptide corresponding to a region derived from internal residues of human potassium inwardly-rectifying channel, subfamily J, member 6
Target Name	KCNJ6
Other Names	BIR1; GIRK2; KATP2; KCNJ7; GIRK-2; KATP-2; KIR3.2; hiGIRK2
Accession No.	Swiss-Prot#: P48051NCBI Gene ID: 3763Gene Accssion: NP_002231
Uniprot	P48051
GeneID	3763;
Concentration	1.4mg/ml
Formulation	Rabbit IgG in pH7.4 PBS, 0.05% NaN ₃ , 40% Glycerol.
Storage	Store at -20°C

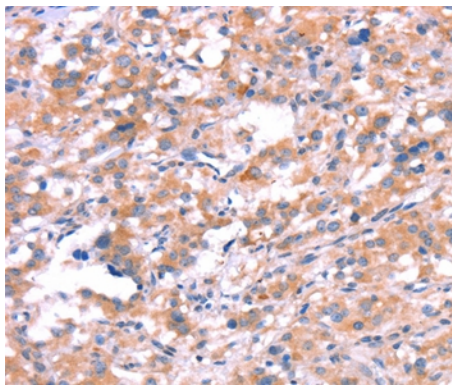
Application Details

Immunohistochemistry: 1:25-1:100

Images



Immunohistochemical analysis of paraffin-embedded Human gastric cancer tissue using #37593 at dilution 1/20.



Immunohistochemical analysis of paraffin-embedded Human thyroid cancer tissue using #37593 at dilution 1/20.

Background

Potassium channels are present in most mammalian cells, where they participate in a wide range of physiologic responses. The protein encoded by this gene is an integral membrane protein and inward-rectifier type potassium channel. The encoded protein, which has a greater tendency to allow potassium to flow into a cell rather than out of a cell, is controlled by G-proteins and may be involved in the regulation of insulin secretion by glucose. It associates with two other G-protein-activated potassium channels to form a heteromultimeric pore-forming complex.

Note: This product is for in vitro research use only