

## GCGR Antibody

Catalog No: #37596

Orders: [order@signalwayantibody.com](mailto:order@signalwayantibody.com)Support: [tech@signalwayantibody.com](mailto:tech@signalwayantibody.com)

## Description

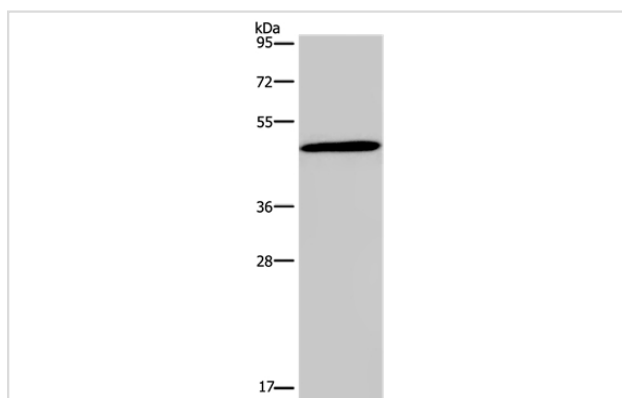
Product Name	GCGR Antibody
Host Species	Rabbit
Clonality	Polyclonal
Purification	Antigen affinity purification.
Applications	WB IHC
Species Reactivity	Hu Ms Rt
Specificity	The antibody detects endogenous levels of total GCGR protein.
Immunogen Type	Peptide
Immunogen Description	Synthetic peptide corresponding to a region derived from internal residues of human glucagon receptor
Target Name	GCGR
Other Names	GGR
Accession No.	Swiss-Prot#: P47871NCBI Gene ID: 2642Gene Accssion: NP_000151
Uniprot	P47871
GeneID	2642;
SDS-PAGE MW	54kd
Concentration	2.7mg/ml
Formulation	Rabbit IgG in pH7.4 PBS, 0.05% NaN <sub>3</sub> , 40% Glycerol.
Storage	Store at -20°C

## Application Details

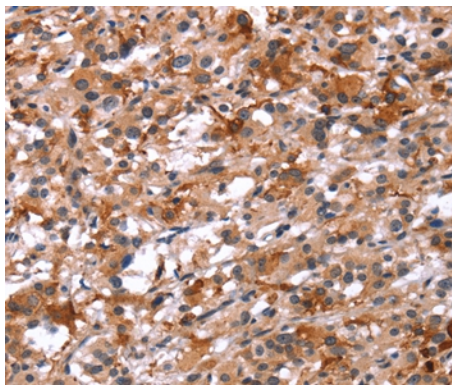
Western blotting: 1:200-1:1000

Immunohistochemistry: 1:50-1:200

## Images



Gel: 8%SDS-PAGE  
Lysate: 50ug 293T cell  
Primary antibody: 1/200 dilution  
Secondary antibody dilution: 1/8000  
Exposure time: 30 seconds



Immunohistochemical analysis of paraffin-embedded Human thyroid cancer tissue using #37596 at dilution 1/40.

## Background

The protein encoded by this gene is a glucagon receptor that is important in controlling blood glucose levels. Defects in this gene are a cause of non-insulin-dependent diabetes mellitus (NIDDM).

Note: This product is for in vitro research use only