

Description

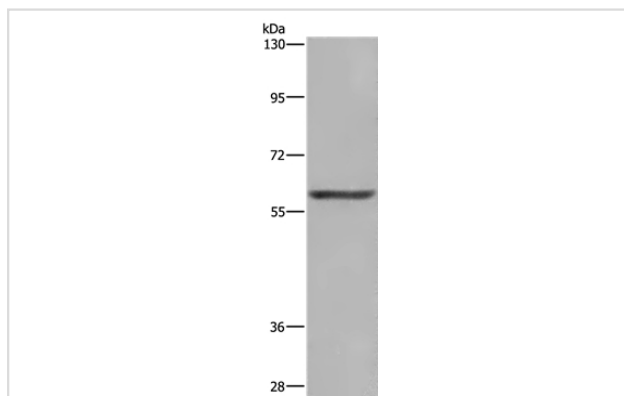
Product Name	GLS Antibody
Host Species	Rabbit
Clonality	Polyclonal
Purification	Antigen affinity purification.
Applications	WB IHC
Species Reactivity	Hu
Specificity	The antibody detects endogenous levels of total GLS protein.
Immunogen Type	Peptide
Immunogen Description	Synthetic peptide corresponding to residues near the C terminal of human glutaminase
Target Name	GLS
Other Names	GAC; GAM; KGA; GLS1; AAD20
Accession No.	Swiss-Prot#: O94925NCBI Gene ID: 2744Gene Accssion: NP_055720
Uniprot	O94925
GeneID	2744;
SDS-PAGE MW	73kd
Concentration	1.7mg/ml
Formulation	Rabbit IgG in pH7.4 PBS, 0.05% NaN ₃ , 40% Glycerol.
Storage	Store at -20°C

Application Details

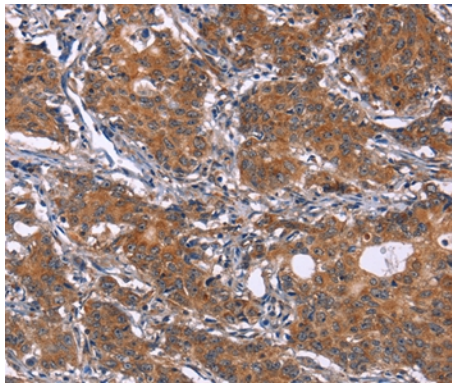
Western blotting: 1:200-1:1000

Immunohistochemistry: 1:25-1:100

Images



Gel: 6%SDS-PAGE
Lysate: 40ug HepG2 cell
Primary antibody: 1/400 dilution
Secondary antibody dilution: 1/8000
Exposure time: 1 second



Immunohistochemical analysis of paraffin-embedded Human gastric cancer tissue using #37597 at dilution 1/25.

Background

This gene encodes the K-type mitochondrial glutaminase. The encoded protein is a phosphate-activated amidohydrolase that catalyzes the hydrolysis of glutamine to glutamate and ammonia. This protein is primarily expressed in the brain and kidney and plays an essential role in generating energy for metabolism, synthesizing the brain neurotransmitter glutamate and maintaining acid-base balance in the kidney. Alternate splicing results in multiple transcript variants.

Note: This product is for in vitro research use only