

GPR124 Antibody

Catalog No: #37603

Orders: order@signalwayantibody.com

Support: tech@signalwayantibody.com

Description

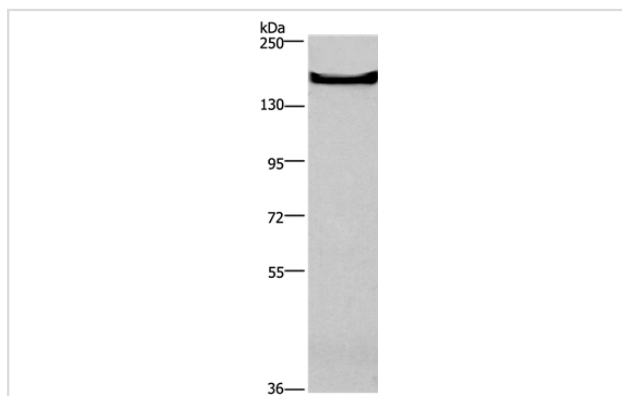
Product Name	GPR124 Antibody
Host Species	Rabbit
Clonality	Polyclonal
Purification	Antigen affinity purification.
Applications	WB IHC
Species Reactivity	Hu Ms
Specificity	The antibody detects endogenous levels of total GPR124 protein.
Immunogen Type	Peptide
Immunogen Description	Synthetic peptide corresponding to a region derived from internal residues of human G protein-coupled receptor 124
Target Name	GPR124
Other Names	TEM5
Accession No.	Swiss-Prot#: Q96PE1NCBI Gene ID: 25960Gene Accssion: NP_116166
Uniprot	Q96PE1
GeneID	25960;
SDS-PAGE MW	143kd
Concentration	1.2mg/ml
Formulation	Rabbit IgG in pH7.4 PBS, 0.05% NaN ₃ , 40% Glycerol.
Storage	Store at -20°C

Application Details

Western blotting: 1:500-1:2000

Immunohistochemistry: 1:100-1:300

Images



Gel: 6%SDS-PAGE

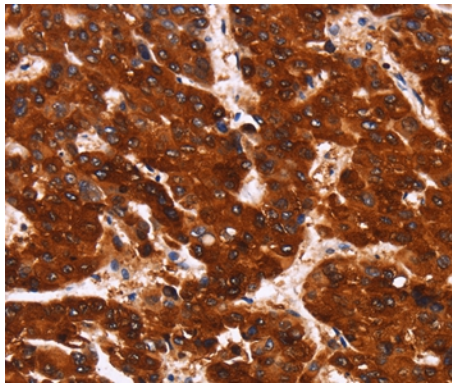
Lysates (from left to right): Mouse bladder tissue

Amount of lysate: 40ug per lane

Primary antibody: 1/300 dilution

Secondary antibody dilution: 1/8000

Exposure time: 40 seconds



Immunohistochemical analysis of paraffin-embedded Human liver cancer tissue using #37603 at dilution 1/40.

Background

TEM5 (G-protein coupled receptor 124) and TEM7 (plexin domain containing 1). TEMs are associated with the cell surface membrane at low levels in normal human and mouse tissues. TEM5 is a seven-pass transmembrane receptor, whereas TEM1, TEM7 and TEM8 span the membrane once. TEM5 expression is elevated during tumor angiogenesis and neoangiogenesis. TEM7 is highly expressed in tumor endothelium and neurons. Therefore, TEM5 and TEM7 may be suitable targets for the development of antiangiogenic therapies.

Note: This product is for in vitro research use only