

GPR171 Antibody

Catalog No: #37604

Orders: order@signalwayantibody.comSupport: tech@signalwayantibody.com

Description

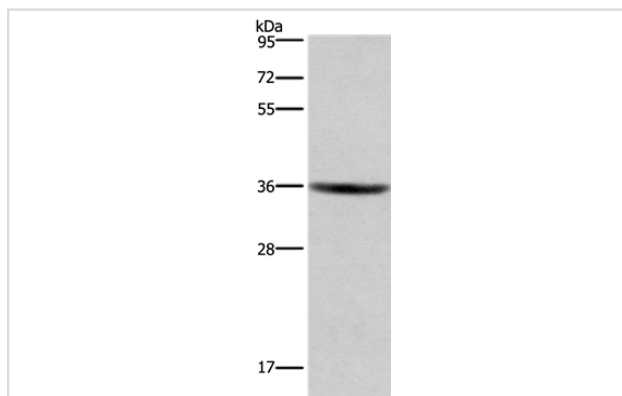
Product Name	GPR171 Antibody
Host Species	Rabbit
Clonality	Polyclonal
Purification	Antigen affinity purification.
Applications	WB IHC
Species Reactivity	Hu
Specificity	The antibody detects endogenous levels of total GPR171 protein.
Immunogen Type	Peptide
Immunogen Description	Synthetic peptide corresponding to residues near the C terminal of human G protein-coupled receptor 171
Target Name	GPR171
Other Names	H963
Accession No.	Swiss-Prot#: O14626NCBI Gene ID: 29909Gene Accssion: NP_037440
Uniprot	O14626
GeneID	29909;
SDS-PAGE MW	37kd
Concentration	1.6mg/ml
Formulation	Rabbit IgG in pH7.4 PBS, 0.05% NaN ₃ , 40% Glycerol.
Storage	Store at -20°C

Application Details

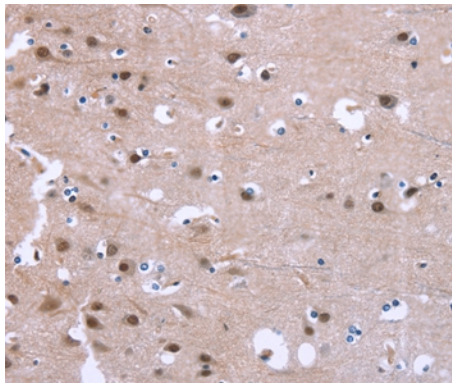
Western blotting: 1:500-1:2000

Immunohistochemistry: 1:25-1:100

Images



Gel: 8%SDS-PAGE
Lysate: 40ug HT-29 cell
Primary antibody: 1/400 dilution
Secondary antibody dilution: 1/8000
Exposure time: 3 minutes



Immunohistochemical analysis of paraffin-embedded Human brain tissue using #37604 at dilution 1/25.

Background

Probable G-protein coupled receptor 171 (GPR171) is a protein that in humans is encoded by the GPR171 gene. One of the most abundant peptides in brain, LENS SPQAPARRLLPP (named BigLEN), which can activate GPR171. Additional studies showed that the BigLEN⁺GPR171 system plays an important role in regulating feeding and metabolism in mice. Thus, GPR171 is a potential target for developing antiobesity drugs.

Note: This product is for in vitro research use only