

GPER1 Antibody

Catalog No: #37606

Orders: order@signalwayantibody.com

Support: tech@signalwayantibody.com

Description

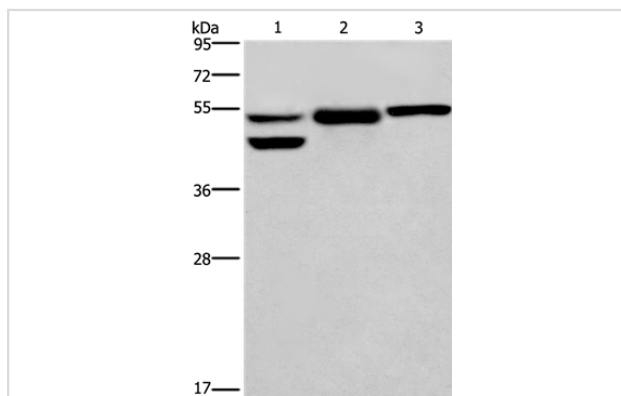
Product Name	GPER1 Antibody
Host Species	Rabbit
Clonality	Polyclonal
Purification	Antigen affinity purification.
Applications	WB IHC
Species Reactivity	Hu
Specificity	The antibody detects endogenous levels of total GPER1 protein.
Immunogen Type	Peptide
Immunogen Description	Synthetic peptide corresponding to residues near the C terminal of human G protein-coupled estrogen receptor 1
Target Name	GPER1
Other Names	CEPR; GPER; DRY12; FEG-1; GPR30; LERGU; LyGPR; CMKRL2; LERGU2; GPCR-Br
Accession No.	Swiss-Prot#: Q99527NCBI Gene ID: 2852Gene Accssion: NP_001496
Uniprot	Q99527
GeneID	2852;
SDS-PAGE MW	42kd
Concentration	2.8mg/ml
Formulation	Rabbit IgG in pH7.4 PBS, 0.05% NaN ₃ , 40% Glycerol.
Storage	Store at -20°C

Application Details

Western blotting: 1:200-1:1000

Immunohistochemistry: 1:25-1:100

Images



Gel: 8%SDS-PAGE

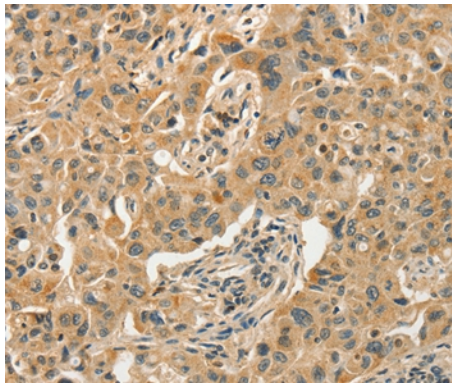
Lysates (from left to right): Human placenta tissue, HepG2 and A549 cell

Amount of lysate: 40ug per lane

Primary antibody: 1/350 dilution

Secondary antibody dilution: 1/8000

Exposure time: 5 minutes



Immunohistochemical analysis of paraffin-embedded Human thyroid cancer tissue using #37606 at dilution 1/25.

Background

This gene is a member of the G-protein coupled receptor 1 family and encodes a multi-pass membrane protein that localizes to the endoplasmic reticulum. The protein binds estrogen, resulting in intracellular calcium mobilization and synthesis of phosphatidylinositol 3,4,5-trisphosphate in the nucleus. This protein therefore plays a role in the rapid nongenomic signaling events widely observed following stimulation of cells and tissues with estrogen. Alternate transcriptional splice variants which encode the same protein have been characterized.

Note: This product is for in vitro research use only