

## GPR39 Antibody

Catalog No: #37607

Orders: order@signalwayantibody.com

Support: tech@signalwayantibody.com

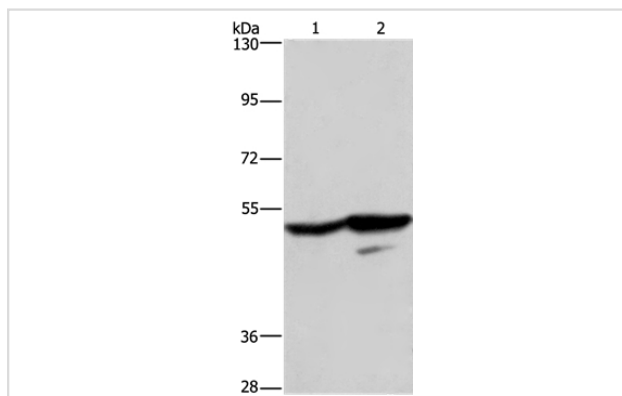
## Description

Product Name	GPR39 Antibody
Host Species	Rabbit
Clonality	Polyclonal
Purification	Antigen affinity purification.
Applications	WB
Species Reactivity	Hu
Specificity	The antibody detects endogenous levels of total GPR39 protein.
Immunogen Type	Peptide
Immunogen Description	Synthetic peptide corresponding to a region derived from internal residues of human G protein-coupled receptor 39
Target Name	GPR39
Other Names	G protein-coupled receptor 39; G-protein coupled receptor 39; GPR39; MGC149541
Accession No.	Swiss-Prot#: O43194NCBI Gene ID: 2863Gene Accssion: NP_001499
Uniprot	O43194
GeneID	2863;
SDS-PAGE MW	51kd
Concentration	2.6mg/ml
Formulation	Rabbit IgG in pH7.4 PBS, 0.05% NaN <sub>3</sub> , 40% Glycerol.
Storage	Store at -20°C

## Application Details

Western blotting: 1:200-1:1000

## Images



Gel: 8%SDS-PAGE  
 Lysates (from left to right): A431 and K562 cell  
 Amount of lysate: 40ug per lane  
 Primary antibody: 1/200 dilution  
 Secondary antibody dilution: 1/8000  
 Exposure time: 5 minutes

## Background

G-protein coupled receptor 39 is a protein that in humans is encoded by the GPR39 gene. The predicted 453-amino acid GPR39 protein contains the

7 transmembrane domains characteristic of GPCRs. By sequence comparison with other GPCRs, the protein sequence of GPR39 is 27% and 32% identical to that of GSHR and neurotensin receptor-1, respectively. Northern blot analysis revealed that GPR39 is expressed widely as a 1.8- to 2-kb mRNA. A 3-kb transcript is present on Northern blots of some tissues, either in addition to the smaller mRNA or as the only hybridizing band.

---

Note: This product is for in vitro research use only