

GPR65 Antibody

Catalog No: #37608

Orders: order@signalwayantibody.comSupport: tech@signalwayantibody.com

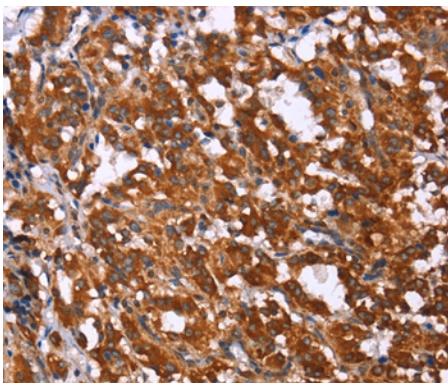
Description

Product Name	GPR65 Antibody
Host Species	Rabbit
Clonality	Polyclonal
Purification	Antigen affinity purification.
Applications	IHC
Species Reactivity	Hu
Specificity	The antibody detects endogenous levels of total GPR65 protein.
Immunogen Type	Peptide
Immunogen Description	Synthetic peptide corresponding to residues near the C terminal of human G protein-coupled receptor 65
Target Name	GPR65
Other Names	TDAG8; hTDAG8
Accession No.	Swiss-Prot#: Q8IYL9NCBI Gene ID: 8477Gene Accssion: NP_003599
Uniprot	Q8IYL9
GeneID	8477;
Concentration	0.7mg/ml
Formulation	Rabbit IgG in pH7.4 PBS, 0.05% NaN ₃ , 40% Glycerol.
Storage	Store at -20°C

Application Details

Immunohistochemistry: 1:25-1:100

Images



Immunohistochemical analysis of paraffin-embedded Human thyroid cancer tissue using #37608 at dilution 1/15.

Background

TDAG8 (for T-cell death-associated gene 8) is a seven transmembrane G protein-coupled receptor (GPCR) that was originally identified from a human thyroid cDNA library and subsequently shown to be expressed predominantly in thymus, lymph nodes, peripheral blood leukocytes and spleen.

TDAG8, which is alternatively designated GPCR25, is grouped collectively with other GPCRs that are induced during T cell receptor engagement-mediated apoptosis and T cell activation, which also include G2A (for G2 accumulation) and P2Y2 (for P2 nucleotide) receptor.?

Note: This product is for in vitro research use only