

GPR78 Antibody

Catalog No: #37609

Orders: order@signalwayantibody.com

Support: tech@signalwayantibody.com

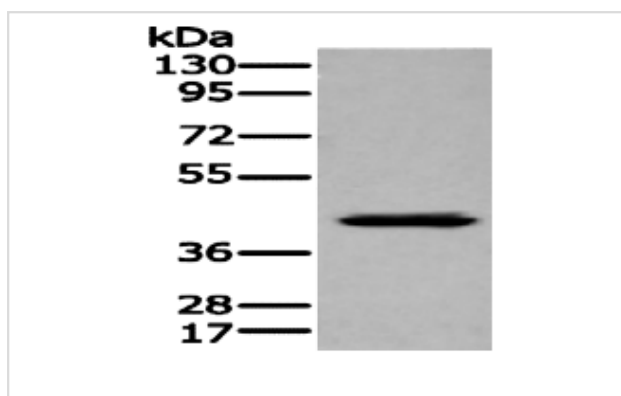
Description

Product Name	GPR78 Antibody
Host Species	Rabbit
Clonality	Polyclonal
Purification	Antigen affinity purification.
Applications	WB
Species Reactivity	Human
Specificity	The antibody detects endogenous levels of total GPR78 protein.
Immunogen Type	Peptide
Immunogen Description	Synthetic peptide corresponding to residues near the C terminal of human G protein-coupled receptor 78
Target Name	GPR78
Other Names	G protein-coupled receptor 78; G-protein coupled receptor 78; GPR78
Accession No.	Swiss-Prot#: Q96P69NCBI Gene ID: 27201Gene Accssion: NP_543009
Uniprot	Q96P69
GeneID	27201;
SDS-PAGE MW	39kd
Concentration	0.2mg/ml
Formulation	Rabbit IgG in pH7.4 PBS, 0.05% NaN ₃ , 40% Glycerol.
Storage	Store at -20°C

Application Details

Western blotting: 1:500-1:2000

Images



Gel: 8%SDS-PAGE
 Lysate: 40 μ g
 Lane: Human kidney tissue lysate
 Primary antibody: GPR78 Antibody at dilution 1/400
 Secondary antibody: Goat anti rabbit IgG at 1/8000 dilution
 Exposure time: 1 minute

Background

The protein encoded by this gene belongs to the G protein-coupled receptor family, which contain 7 transmembrane domains and transduce extracellular signals through heterotrimeric G proteins. This is an orphan receptor, which displays significant level of constitutive activity. Association

analysis shows preliminary evidence for the involvement of this gene in susceptibility to bipolar affective disorder and schizophrenia. Alternatively spliced transcript variants have been found for this gene.

Note: This product is for in vitro research use only