

HDLBP Antibody

Catalog No: #37615

Orders: order@signalwayantibody.com

Support: tech@signalwayantibody.com

Description

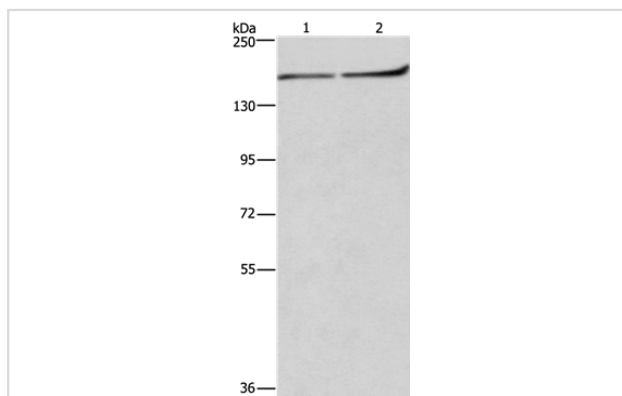
Product Name	HDLBP Antibody
Host Species	Rabbit
Clonality	Polyclonal
Purification	Antigen affinity purification.
Applications	WB IHC
Species Reactivity	Hu Ms
Specificity	The antibody detects endogenous levels of total HDLBP protein.
Immunogen Type	Peptide
Immunogen Description	Synthetic peptide corresponding to a region derived from internal residues of human high density lipoprotein binding protein
Target Name	HDLBP
Other Names	HBP; VGL; PRO2900
Accession No.	Swiss-Prot#: Q00341NCBI Gene ID: 3069Gene Accssion: XP_005247057
Uniprot	Q00341
GeneID	3069;
SDS-PAGE MW	141kd
Concentration	1.9mg/ml
Formulation	Rabbit IgG in pH7.4 PBS, 0.05% NaN ₃ , 40% Glycerol.
Storage	Store at -20°C

Application Details

Western blotting: 1:200-1:1000

Immunohistochemistry: 1:50-1:200

Images



Gel: 6%SDS-PAGE

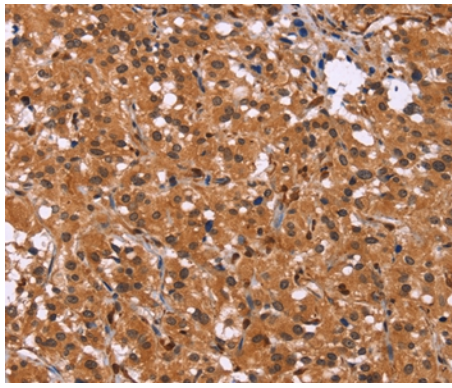
Lysates (from left to right): Raji and NIH/3T3 cell

Amount of lysate: 40ug per lane

Primary antibody: 1/250 dilution

Secondary antibody dilution: 1/8000

Exposure time: 2 minutes



Immunohistochemical analysis of paraffin-embedded Human thyroid cancer tissue using #37615 at dilution 1/30.

Background

The protein encoded by this gene binds high density lipoprotein (HDL) and may function to regulate excess cholesterol levels in cells. The encoded protein also binds RNA and can induce heterochromatin formation. Three transcript variants encoding two different isoforms have been found for this gene.

Note: This product is for in vitro research use only