

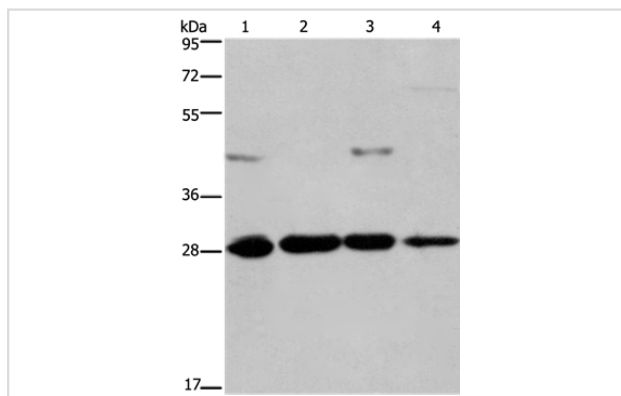
## Description

Product Name	HES1 Antibody
Host Species	Rabbit
Clonality	Polyclonal
Purification	Antigen affinity purification.
Applications	WB
Species Reactivity	Hu
Specificity	The antibody detects endogenous levels of total HES1 protein.
Immunogen Type	Peptide
Immunogen Description	Synthetic peptide corresponding to residues near the C terminal of human hes family bHLH transcription factor 1
Target Name	HES1
Other Names	HHL; HRY; HES-1; bHLHb39
Accession No.	Swiss-Prot#: Q14469NCBI Gene ID: 3280Gene Accssion: NP_005515
Uniprot	Q14469
GeneID	3280;
SDS-PAGE MW	30kd
Concentration	0.7mg/ml
Formulation	Rabbit IgG in pH7.4 PBS, 0.05% NaN <sub>3</sub> , 40% Glycerol.
Storage	Store at -20°C

## Application Details

Western blotting: 1:200-1:1000

## Images



Gel: 8%SDS-PAGE  
 Lysates (from left to right): LoVo, Jurkat, HT-29 and MCF-7 cell  
 Amount of lysate: 40ug per lane  
 Primary antibody: 1/200 dilution  
 Secondary antibody dilution: 1/8000  
 Exposure time: 5 minutes

## Background

This protein belongs to the basic helix-loop-helix family of transcription factors. It is a transcriptional repressor of genes that require a bHLH protein for

their transcription. The protein has a particular type of basic domain that contains a helix interrupting protein that binds to the N-box rather than the canonical E-box.

---

Note: This product is for in vitro research use only