

HES5 Antibody

Catalog No: #37617

Orders: order@signalwayantibody.com

Support: tech@signalwayantibody.com

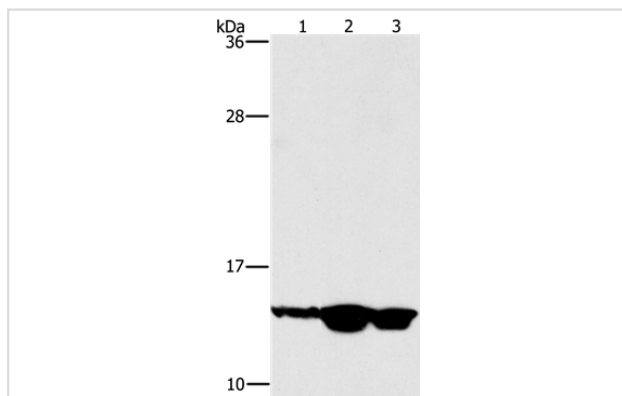
Description

Product Name	HES5 Antibody
Host Species	Rabbit
Clonality	Polyclonal
Purification	Antigen affinity purification.
Applications	WB
Species Reactivity	Hu Ms Rt
Specificity	The antibody detects endogenous levels of total HES5 protein.
Immunogen Type	Peptide
Immunogen Description	Synthetic peptide corresponding to a region derived from internal residues of human hes family bHLH transcription factor 5
Target Name	HES5
Other Names	bHLHb38
Accession No.	Swiss-Prot#: Q5TA89NCBI Gene ID: 388585Gene Accssion: NP_001010926/Q5TA89
Uniprot	Q5TA89
GeneID	388585;
SDS-PAGE MW	18kd
Concentration	1.8mg/ml
Formulation	Rabbit IgG in pH7.4 PBS, 0.05% NaN ₃ , 40% Glycerol.
Storage	Store at -20°C

Application Details

Western blotting: 1:200-1:1000

Images



Gel: 8%SDS-PAGE

Lysates (from left to right): Mouse skin tissue, human fetal liver and fetal brain tissue

Amount of lysate: 40ug per lane

Primary antibody: 1/100 dilution

Secondary antibody dilution: 1/8000

Exposure time: 2 minutes

Background

This gene encodes a member of a family of basic helix-loop-helix transcriptional repressors. The protein product of this gene, which is activated

downstream of the Notch pathway, regulates cell differentiation in multiple tissues. Disruptions in the normal expression of this gene have been associated with developmental diseases and cancer.

Note: This product is for in vitro research use only