

HLTF Antibody

Catalog No: #37621

Orders: order@signalwayantibody.comSupport: tech@signalwayantibody.com

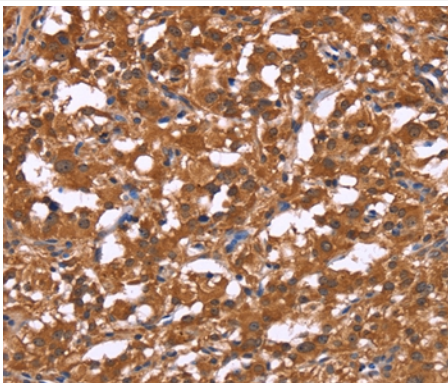
Description

Product Name	HLTF Antibody
Host Species	Rabbit
Clonality	Polyclonal
Purification	Antigen affinity purification.
Applications	IHC
Species Reactivity	Hu
Specificity	The antibody detects endogenous levels of total HLTF protein.
Immunogen Type	Peptide
Immunogen Description	Synthetic peptide corresponding to a region derived from internal residues of human helicase-like transcription factor
Target Name	HLTF
Other Names	ZBU1; HLTF1; RNF80; HIP116; SNF2L3; HIP116A; SMARCA3
Accession No.	Swiss-Prot#: Q14527NCBI Gene ID: 6596Gene Accssion: NP_003062
Uniprot	Q14527
GeneID	6596;
Concentration	1.6mg/ml
Formulation	Rabbit IgG in pH7.4 PBS, 0.05% NaN ₃ , 40% Glycerol.
Storage	Store at -20°C

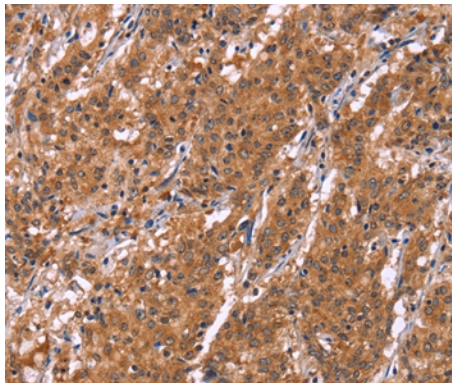
Application Details

Immunohistochemistry: 1:50-1:100

Images



Immunohistochemical analysis of paraffin-embedded Human thyroid cancer tissue using #37621 at dilution 1/30.



Immunohistochemical analysis of paraffin-embedded Human gastric cancer tissue using #37621 at dilution 1/30.

Background

This gene encodes a member of the SWI/SNF family. Members of this family have helicase and ATPase activities and are thought to regulate transcription of certain genes by altering the chromatin structure around those genes. The encoded protein contains a RING finger DNA binding motif. Two transcript variants encoding the same protein have been found for this gene. However, use of an alternative translation start site produces an isoform that is truncated at the N-terminus compared to the full-length protein.

Note: This product is for in vitro research use only