

## HMGCS2 Antibody

Catalog No: #37623

Orders: order@signalwayantibody.com

Support: tech@signalwayantibody.com

## Description

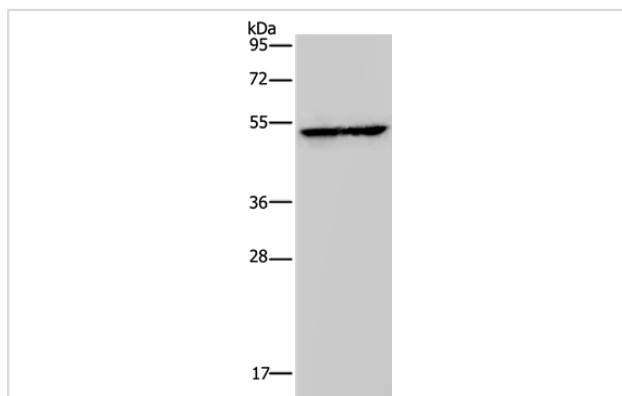
Product Name	HMGCS2 Antibody
Host Species	Rabbit
Clonality	Polyclonal
Purification	Antigen affinity purification.
Applications	WB IHC
Species Reactivity	Hu
Specificity	The antibody detects endogenous levels of total HMGCS2 protein.
Immunogen Type	Peptide
Immunogen Description	Synthetic peptide corresponding to a region derived from internal residues of human 3-hydroxy-3-methylglutaryl-CoA synthase 2 (mitochondrial)
Target Name	HMGCS2
Other Names	HMCS2; HMG-CoA synthase; HMGCS2;
Accession No.	Swiss-Prot#: P54868NCBI Gene ID: 3158Gene Accssion: NP_005509
Uniprot	P54868
GeneID	3158;
SDS-PAGE MW	57kd
Concentration	2.5mg/ml
Formulation	Rabbit IgG in pH7.4 PBS, 0.05% NaN <sub>3</sub> , 40% Glycerol.
Storage	Store at -20°C

## Application Details

Western blotting: 1:200-1:1000

Immunohistochemistry: 1:50-1:200

## Images



Gel: 8%SDS-PAGE

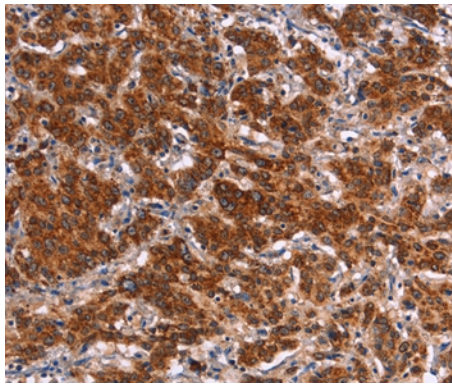
Lysates (from left to right): Human fetal liver tissue

Amount of lysate: 40ug per lane

Primary antibody: 1/300 dilution

Secondary antibody dilution: 1/8000

Exposure time: 30 seconds



Immunohistochemical analysis of paraffin-embedded Human gastric cancer tissue using #37623 at dilution 1/40.

## Background

The protein encoded by this gene belongs to the HMG-CoA synthase family. It is a mitochondrial enzyme that catalyzes the first reaction of ketogenesis, a metabolic pathway that provides lipid-derived energy for various organs during times of carbohydrate deprivation, such as fasting. Mutations in this gene are associated with HMG-CoA synthase deficiency. Alternatively spliced transcript variants encoding different isoforms have been found for this gene.

Note: This product is for in vitro research use only