

HNRNPL Antibody

Catalog No: #37624

Orders: order@signalwayantibody.com

Support: tech@signalwayantibody.com

Description

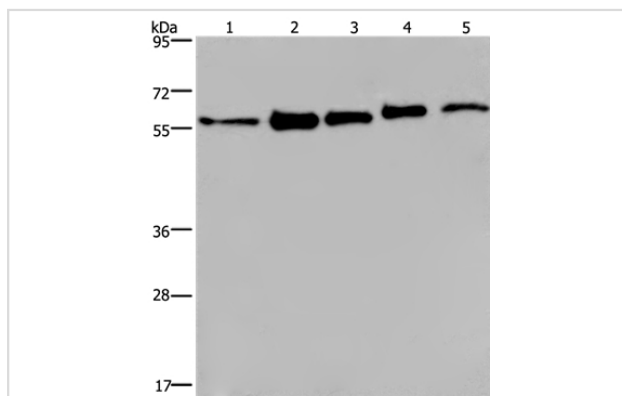
Product Name	HNRNPL Antibody
Host Species	Rabbit
Clonality	Polyclonal
Purification	Antigen affinity purification.
Applications	WB IHC
Species Reactivity	Hu
Specificity	The antibody detects endogenous levels of total HNRNPL protein.
Immunogen Type	Peptide
Immunogen Description	Synthetic peptide corresponding to a region derived from internal residues of human heterogeneous nuclear ribonucleoprotein L
Target Name	HNRNPL
Other Names	HNRPL; hnRNP-L; P/OKcl.14
Accession No.	Swiss-Prot#: P14866NCBI Gene ID: 3191Gene Accssion: NP_001524
Uniprot	P14866
GeneID	3191;
SDS-PAGE MW	64kd
Concentration	2.5mg/ml
Formulation	Rabbit IgG in pH7.4 PBS, 0.05% NaN ₃ , 40% Glycerol.
Storage	Store at -20°C

Application Details

Western blotting: 1:500-1:2000

Immunohistochemistry: 1:50-1:200

Images



Gel: 6%SDS-PAGE

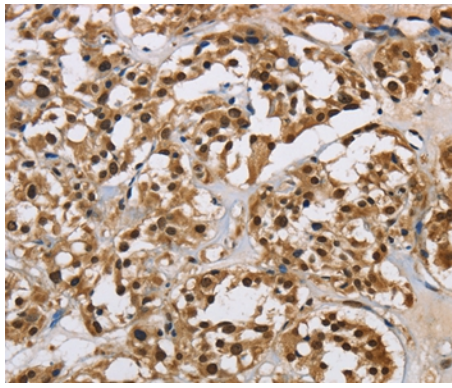
Lysates (from left to right): MCF-7, 293T, A549, HeLa and HepG2 cell

Amount of lysate: 40ug per lane

Primary antibody: 1/450 dilution

Secondary antibody dilution: 1/8000

Exposure time: 40 seconds



Immunohistochemical analysis of paraffin-embedded Human thyroid cancer tissue using #37624 at dilution 1/40.

Background

Heterogeneous nuclear RNAs (hnRNAs) which include mRNA precursors and mature mRNAs are associated with specific proteins to form heterogeneous ribonucleoprotein (hnRNP) complexes. Heterogeneous nuclear ribonucleoprotein L is among the proteins that are stably associated with hnRNP complexes and along with other hnRNP proteins is likely to play a major role in the formation, packaging, processing, and function of mRNA. Heterogeneous nuclear ribonucleoprotein L is present in the nucleoplasm as part of the HNRNP complex. HNRNP proteins have also been identified outside of the nucleoplasm. Exchange of hnRNP for mRNA-binding proteins accompanies transport of mRNA from the nucleus to the cytoplasm.

Note: This product is for in vitro research use only