

IL17RA Antibody

Catalog No: #37648

Orders: order@signalwayantibody.comSupport: tech@signalwayantibody.com

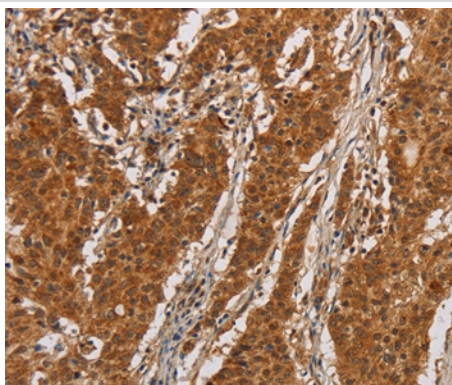
Description

Product Name	IL17RA Antibody
Host Species	Rabbit
Clonality	Polyclonal
Purification	Antigen affinity purification.
Applications	IHC
Species Reactivity	Hu
Specificity	The antibody detects endogenous levels of total IL17RA protein.
Immunogen Type	Peptide
Immunogen Description	Synthetic peptide corresponding to a region derived from internal residues of human interleukin 17 receptor A
Target Name	IL17RA
Other Names	CD217; IL17R; CANDF5; CDw217; IL-17RA; hIL-17R
Accession No.	Swiss-Prot#: Q96F46NCBI Gene ID: 23765Gene Accssion: NP_055154
Uniprot	Q96F46
GeneID	23765;
Concentration	2.2mg/ml
Formulation	Rabbit IgG in pH7.4 PBS, 0.05% NaN ₃ , 40% Glycerol.
Storage	Store at -20°C

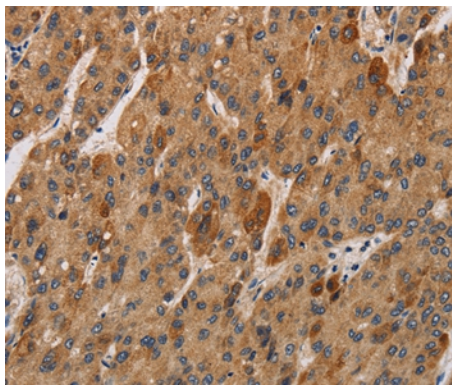
Application Details

Immunohistochemistry: 1:50-1:200

Images



Immunohistochemical analysis of paraffin-embedded Human gastric cancer tissue using #37648 at dilution 1/20.



Immunohistochemical analysis of paraffin-embedded Human liver cancer tissue using #37648 at dilution 1/20.

Background

Interleukin 17A (IL17A) is a proinflammatory cytokine secreted by activated T-lymphocytes. It is a potent inducer of the maturation of CD34-positive hematopoietic precursors into neutrophils. The transmembrane protein encoded by this gene (interleukin 17A receptor; IL17RA) is a ubiquitous type I membrane glycoprotein that binds with low affinity to interleukin 17A. Interleukin 17A and its receptor play a pathogenic role in many inflammatory and autoimmune diseases such as rheumatoid arthritis. Like other cytokine receptors, this receptor likely has a multimeric structure. Alternative splicing results in multiple transcript variants encoding different isoforms.

Note: This product is for in vitro research use only