

IL19 Antibody

Catalog No: #37650

Package Size: #37650-1 50ul #37650-2 100ul

Orders: order@signalwayantibody.comSupport: tech@signalwayantibody.com

Description

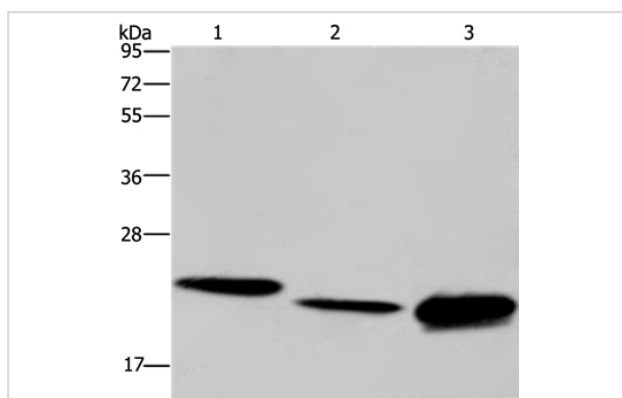
| | |
|-----------------------|--|
| Product Name | IL19 Antibody |
| Host Species | Rabbit |
| Clonality | Polyclonal |
| Purification | Antigen affinity purification. |
| Applications | WB IHC |
| Species Reactivity | Hu Ms |
| Specificity | The antibody detects endogenous levels of total IL19 protein. |
| Immunogen Type | Peptide |
| Immunogen Description | Synthetic peptide corresponding to a region derived from internal residues of human interleukin 19 |
| Target Name | IL19 |
| Other Names | MDA1; NG.1; ZMDA1; IL-10C |
| Accession No. | Swiss-Prot#: Q9UHD0NCBI Gene ID: 29949Gene Accssion: NP_037503 |
| Uniprot | Q9UHD0 |
| GeneID | 29949; |
| SDS-PAGE MW | 20kd |
| Concentration | 2.3mg/ml |
| Formulation | Rabbit IgG in pH7.4 PBS, 0.05% NaN ₃ , 40% Glycerol. |
| Storage | Store at -20°C |

Application Details

Western blotting: 1:500-1:2000

Immunohistochemistry: 1:50-1:200

Images



Gel: 10%SDS-PAGE

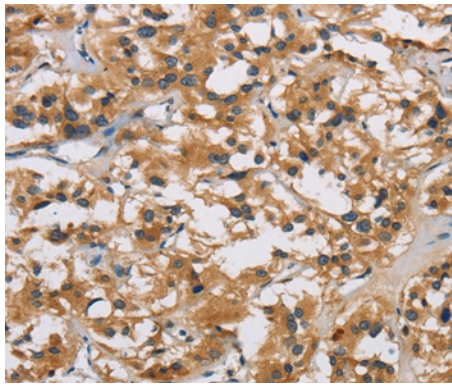
Lysates (from left to right): HeLa cell, mouse liver tissue and Raji cell

Amount of lysate: 40ug per lane

Primary antibody: 1/550 dilution

Secondary antibody dilution: 1/8000

Exposure time: 1 minute



Immunohistochemical analysis of paraffin-embedded Human thyroid cancer tissue using #37650 at dilution 1/40.

Background

The protein encoded by this gene is a cytokine that belongs to the IL10 cytokine subfamily. This cytokine is found to be preferentially expressed in monocytes. It can bind the IL20 receptor complex and lead to the activation of the signal transducer and activator of transcription 3 (STAT3). A similar cytokine in mouse is reported to up-regulate the expression of IL6 and TNF-alpha and induce apoptosis, which suggests a role of this cytokine in inflammatory responses. Alternatively spliced transcript variants encoding the distinct isoforms have been described.

Note: This product is for in vitro research use only