

IL5RA Antibody

Catalog No: #37652

Orders: order@signalwayantibody.comSupport: tech@signalwayantibody.com

Description

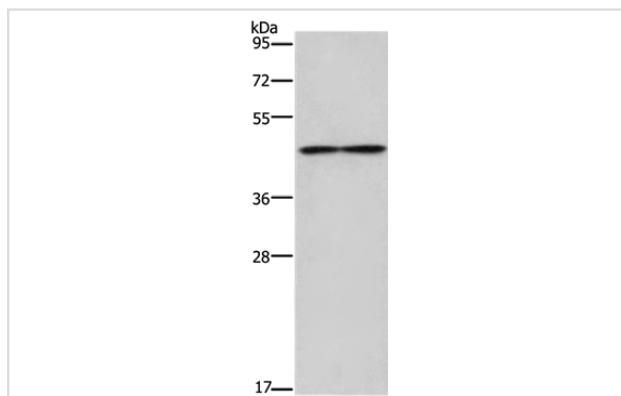
Product Name	IL5RA Antibody
Host Species	Rabbit
Clonality	Polyclonal
Purification	Antigen affinity purification.
Applications	WB IHC
Species Reactivity	Hu Ms
Specificity	The antibody detects endogenous levels of total IL5RA protein.
Immunogen Type	Peptide
Immunogen Description	Synthetic peptide corresponding to residues near the C terminal of human interleukin 5 receptor, alpha
Target Name	IL5RA
Other Names	IL5R; CD125; CDw125; HSIL5R3
Accession No.	Swiss-Prot#: Q01344NCBI Gene ID: 3568Gene Accssion: NP_000555
Uniprot	Q01344
GeneID	3568;
SDS-PAGE MW	48kd
Concentration	2.4mg/ml
Formulation	Rabbit IgG in pH7.4 PBS, 0.05% NaN ₃ , 40% Glycerol.
Storage	Store at -20°C

Application Details

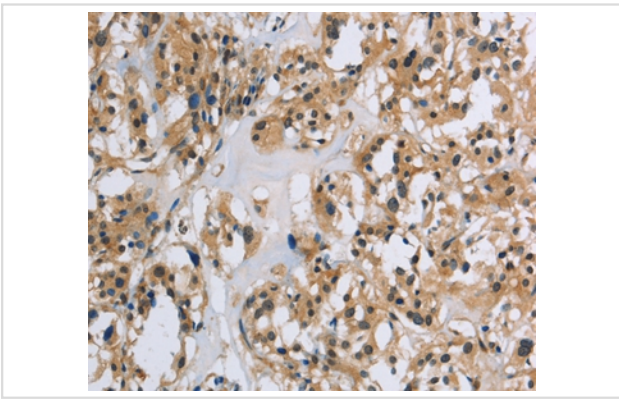
Western blotting: 1:200-1:1000

Immunohistochemistry: 1:50-1:200

Images



Gel: 8%SDS-PAGE
 Lysates (from left to right): Mouse heart tissue
 Amount of lysate: 40ug per lane
 Primary antibody: 1/550 dilution
 Secondary antibody dilution: 1/8000
 Exposure time: 3 minutes



Immunohistochemical analysis of paraffin-embedded Human thyroid cancer tissue using #37652 at dilution 1/40.

Background

The protein encoded by this gene is an interleukin 5 specific subunit of a heterodimeric cytokine receptor. The receptor is comprised of a ligand specific alpha subunit and a signal transducing beta subunit shared by the receptors for interleukin 3 (IL3), colony stimulating factor 2 (CSF2/GM-CSF), and interleukin 5 (IL5). The binding of this protein to IL5 depends on the beta subunit. The beta subunit is activated by the ligand binding, and is required for the biological activities of IL5. This protein has been found to interact with syndecan binding protein (syntenin), which is required for IL5 mediated activation of the transcription factor SOX4. Several alternatively spliced transcript variants encoding four distinct isoforms have been reported.

Note: This product is for in vitro research use only