

## IMPAD1 Antibody

Catalog No: #37654

Orders: [order@signalwayantibody.com](mailto:order@signalwayantibody.com)Support: [tech@signalwayantibody.com](mailto:tech@signalwayantibody.com)

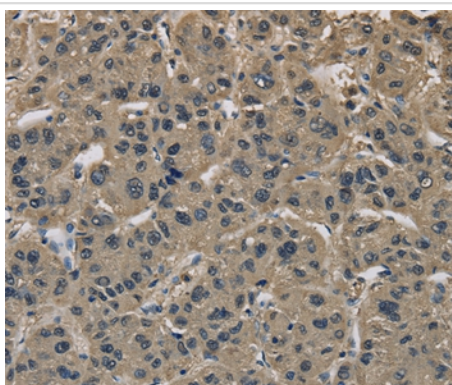
## Description

Product Name	IMPAD1 Antibody
Host Species	Rabbit
Clonality	Polyclonal
Purification	Antigen affinity purification.
Applications	IHC
Species Reactivity	Hu
Specificity	The antibody detects endogenous levels of total IMPAD1 protein.
Immunogen Type	Peptide
Immunogen Description	Synthetic peptide corresponding to a region derived from internal residues of human inositol monophosphatase domain containing 1
Target Name	IMPAD1
Other Names	GPAPP; IMP 3; IMP-3; IMPA3
Accession No.	Swiss-Prot#: Q9NX62NCBI Gene ID: 54928Gene Accsson: NP_060283
Uniprot	Q9NX62
GeneID	54928;
Concentration	2.7mg/ml
Formulation	Rabbit IgG in pH7.4 PBS, 0.05% NaN <sub>3</sub> , 40% Glycerol.
Storage	Store at -20°C

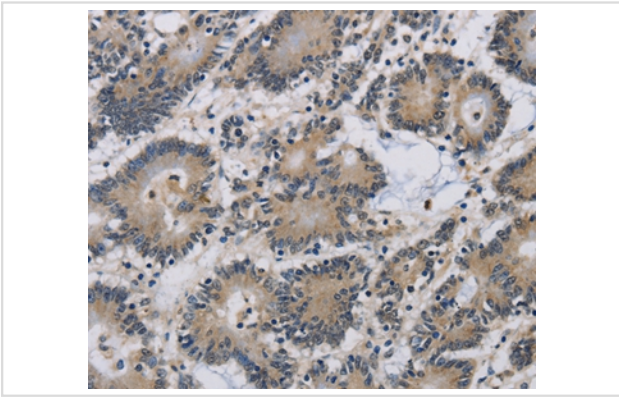
## Application Details

Immunohistochemistry: 1:25-1:100

## Images



Immunohistochemical analysis of paraffin-embedded Human liver cancer tissue using #37654 at dilution 1/20.



Immunohistochemical analysis of paraffin-embedded Human colon cancer tissue using #37654 at dilution 1/20.

## Background

This gene encodes a member of the inositol monophosphatase family. The encoded protein is localized to the Golgi apparatus and catalyzes the hydrolysis of phosphoadenosine phosphate (PAP) to adenosine monophosphate (AMP). Mutations in this gene are a cause of GRAPP type chondrodysplasia with joint dislocations, and a pseudogene of this gene is located on the long arm of chromosome 1.

Note: This product is for in vitro research use only