

IMPDH1 Antibody

Catalog No: #37655

Orders: order@signalwayantibody.com

Support: tech@signalwayantibody.com

Description

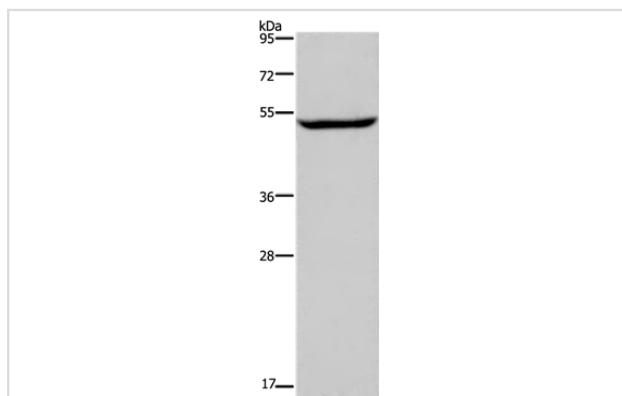
Product Name	IMPDH1 Antibody
Host Species	Rabbit
Clonality	Polyclonal
Purification	Antigen affinity purification.
Applications	WB IHC
Species Reactivity	Hu Ms Rt
Specificity	The antibody detects endogenous levels of total IMPDH1 protein.
Immunogen Type	Peptide
Immunogen Description	Synthetic peptide corresponding to residues near the C terminal of human IMP (inosine 5'-monophosphate) dehydrogenase 1
Target Name	IMPDH1
Other Names	IMPD; RP10; IMPD1; LCA11; sWSS2608
Accession No.	Swiss-Prot#: P20839NCBI Gene ID: 3614Gene Accssion: NP_001136045
Uniprot	P20839
GeneID	3614;
SDS-PAGE MW	55kd
Concentration	1.9mg/ml
Formulation	Rabbit IgG in pH7.4 PBS, 0.05% NaN ₃ , 40% Glycerol.
Storage	Store at -20°C

Application Details

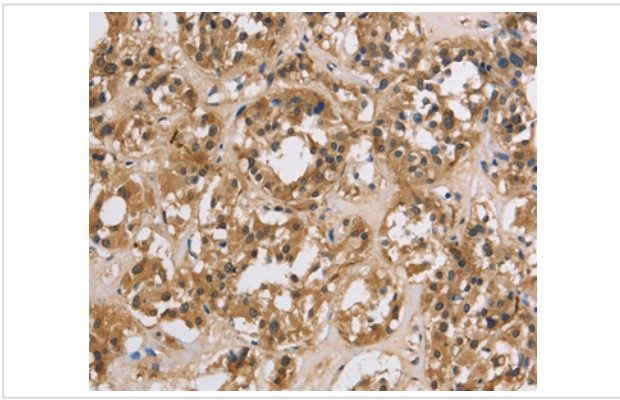
Western blotting: 1:500-1:2000

Immunohistochemistry: 1:25-1:100

Images



Gel: 8%SDS-PAGE
 Lysate: 40ug Raji cell
 Primary antibody: 1/450 dilution
 Secondary antibody dilution: 1/8000
 Exposure time: 1 minute



Immunohistochemical analysis of paraffin-embedded Human thyroid cancer tissue using #37655 at dilution 1/20.

Background

The protein encoded by this gene acts as a homotetramer to regulate cell growth. The encoded protein is an enzyme that catalyzes the synthesis of xanthine monophosphate (XMP) from inosine-5'-monophosphate (IMP). This is the rate-limiting step in the de novo synthesis of guanine nucleotides. Defects in this gene are a cause of retinitis pigmentosa type 10 (RP10). Several transcript variants encoding different isoforms have been found for this gene.

Note: This product is for in vitro research use only