

ITPR3 Antibody

Catalog No: #37667

Orders: order@signalwayantibody.comSupport: tech@signalwayantibody.com

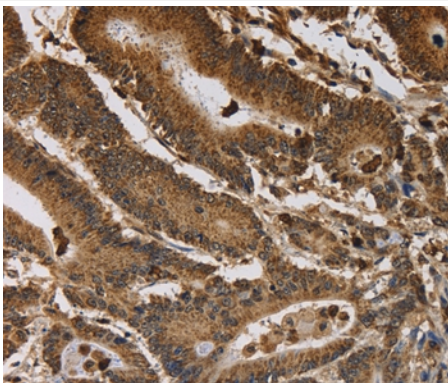
Description

Product Name	ITPR3 Antibody
Host Species	Rabbit
Clonality	Polyclonal
Purification	Antigen affinity purification.
Applications	IHC
Species Reactivity	Hu
Specificity	The antibody detects endogenous levels of total ITPR3 protein.
Immunogen Type	Peptide
Immunogen Description	Synthetic peptide corresponding to a region derived from internal residues of human inositol 1,4,5-trisphosphate receptor, type 3
Target Name	ITPR3
Other Names	IP3R; IP3R3
Accession No.	Swiss-Prot#: Q14573NCBI Gene ID: 3710Gene Accssion: NP_002215
Uniprot	Q14573
GeneID	3710;
Concentration	2.7mg/ml
Formulation	Rabbit IgG in pH7.4 PBS, 0.05% NaN ₃ , 40% Glycerol.
Storage	Store at -20°C

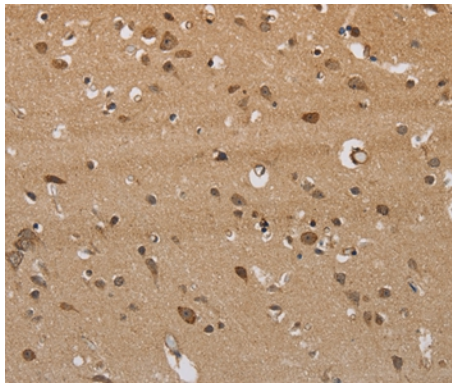
Application Details

Immunohistochemistry: 1:50-1:200

Images



Immunohistochemical analysis of paraffin-embedded Human colon cancer tissue using #37667 at dilution 1/40.



Immunohistochemical analysis of paraffin-embedded Human brain tissue using #37667 at dilution 1/40.

Background

This gene encodes a receptor for inositol 1,4,5-trisphosphate, a second messenger that mediates the release of intracellular calcium. The receptor contains a calcium channel at the C-terminus and the ligand-binding site at the N-terminus. Knockout studies in mice suggest that type 2 and type 3 inositol 1,4,5-trisphosphate receptors play a key role in exocrine secretion underlying energy metabolism and growth.

Note: This product is for in vitro research use only