

JAG1 Antibody

Catalog No: #37668

Orders: order@signalwayantibody.comSupport: tech@signalwayantibody.com

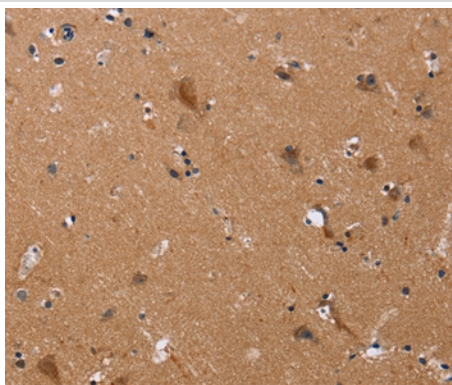
Description

Product Name	JAG1 Antibody
Host Species	Rabbit
Clonality	Polyclonal
Purification	Antigen affinity purification.
Applications	IHC
Species Reactivity	Hu Ms Rt
Specificity	The antibody detects endogenous levels of total JAG1 protein.
Immunogen Type	Peptide
Immunogen Description	Synthetic peptide corresponding to residues near the C terminal of human jagged 1
Target Name	JAG1
Other Names	AGS; AHD; AWS; HJ1; CD339; JAGL1
Accession No.	Swiss-Prot#: P78504NCBI Gene ID: 182Gene Accssion: NP_000205/P78504
Uniprot	P78504
GeneID	182;
Concentration	1.5mg/ml
Formulation	Rabbit IgG in pH7.4 PBS, 0.05% NaN ₃ , 40% Glycerol.
Storage	Store at -20°C

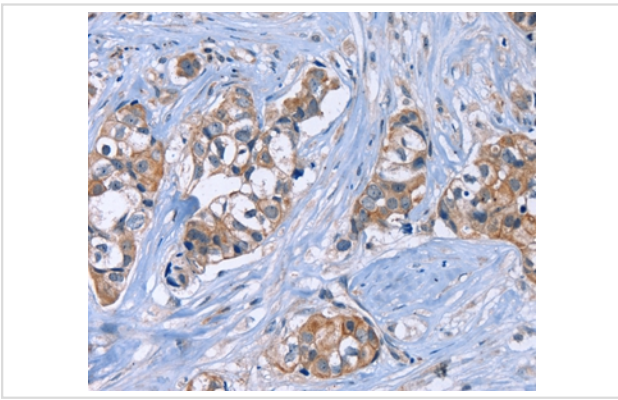
Application Details

Immunohistochemistry: 1:25-1:100

Images



Immunohistochemical analysis of paraffin-embedded Human brain tissue using #37668 at dilution 1/20.



Immunohistochemical analysis of paraffin-embedded Human breast cancer tissue using #37668 at dilution 1/20.

Background

The jagged 1 protein encoded by JAG1 is the human homolog of the *Drosophila* jagged protein. Human jagged 1 is the ligand for the receptor notch 1, the latter a human homolog of the *Drosophila* jagged receptor notch. Mutations that alter the jagged 1 protein cause Alagille syndrome. Jagged 1 signalling through notch 1 has also been shown to play a role in hematopoiesis.

Note: This product is for in vitro research use only