

KDM4A Antibody

Catalog No: #37671

Orders: order@signalwayantibody.comSupport: tech@signalwayantibody.com

Description

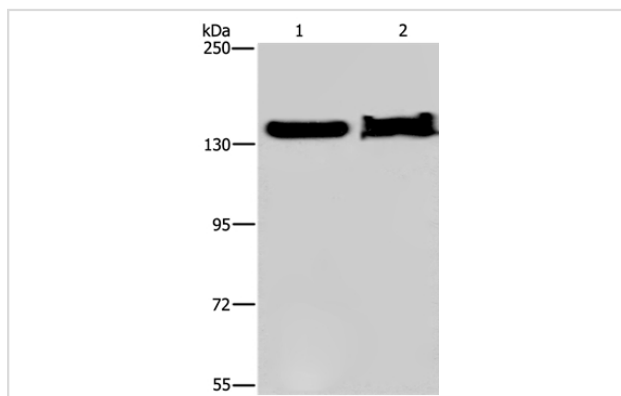
Product Name	KDM4A Antibody
Host Species	Rabbit
Clonality	Polyclonal
Purification	Antigen affinity purification.
Applications	WB IHC
Species Reactivity	Hu Ms
Specificity	The antibody detects endogenous levels of total KDM4A protein.
Immunogen Type	Peptide
Immunogen Description	Synthetic peptide corresponding to a region derived from internal residues of human lysine (K)-specific demethylase 4A
Target Name	KDM4A
Other Names	JMJD2; JHDM3A; JMJD2A; TDRD14A
Accession No.	Swiss-Prot#: O75164NCBI Gene ID: 9682Gene Accssion: NP_055478
Uniprot	O75164
GeneID	9682;
SDS-PAGE MW	121kd
Concentration	2.6mg/ml
Formulation	Rabbit IgG in pH7.4 PBS, 0.05% NaN ₃ , 40% Glycerol.
Storage	Store at -20°C

Application Details

Western blotting: 1:500-1:2000

Immunohistochemistry: 1:50-1:200

Images



Gel: 6%SDS-PAGE

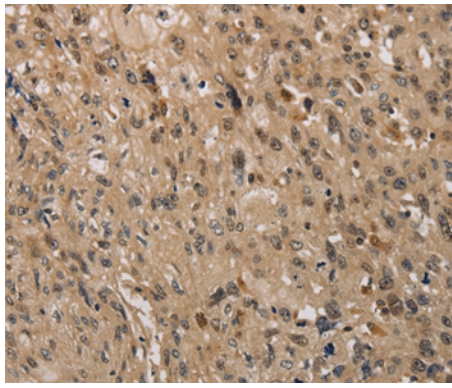
Lysates (from left to right): NIH/3T3 cell and mouse liver tissue

Amount of lysate: 40ug per lane

Primary antibody: 1/650 dilution

Secondary antibody dilution: 1/8000

Exposure time: 5 minutes



Immunohistochemical analysis of paraffin-embedded Human esophagus cancer tissue using #37671 at dilution 1/40.

Background

This gene is a member of the Jumonji domain 2 (JMJD2) family and encodes a protein containing a JmjN domain, a JmjC domain, a JD2H domain, two TUDOR domains, and two PHD-type zinc fingers. This nuclear protein functions as a trimethylation-specific demethylase, converting specific trimethylated histone residues to the dimethylated form, and as a transcriptional repressor.?

Note: This product is for in vitro research use only