

KCNG1 Antibody

Catalog No: #37674

Orders: order@signalwayantibody.comSupport: tech@signalwayantibody.com

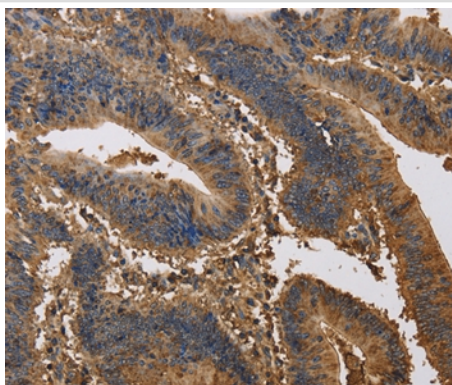
Description

Product Name	KCNG1 Antibody
Host Species	Rabbit
Clonality	Polyclonal
Purification	Antigen affinity purification.
Applications	IHC
Species Reactivity	Hu
Specificity	The antibody detects endogenous levels of total KCNG1 protein.
Immunogen Type	Peptide
Immunogen Description	Synthetic peptide corresponding to residues near the N terminal of human potassium voltage-gated channel, subfamily G, member 1
Target Name	KCNG1
Other Names	K13; kH2; KCNG; KV6.1
Accession No.	Swiss-Prot#: Q9UIX4NCBI Gene ID: 3755Gene Accssion: NP_002228
Uniprot	Q9UIX4
GeneID	3755;
Concentration	2.7mg/ml
Formulation	Rabbit IgG in pH7.4 PBS, 0.05% NaN ₃ , 40% Glycerol.
Storage	Store at -20°C

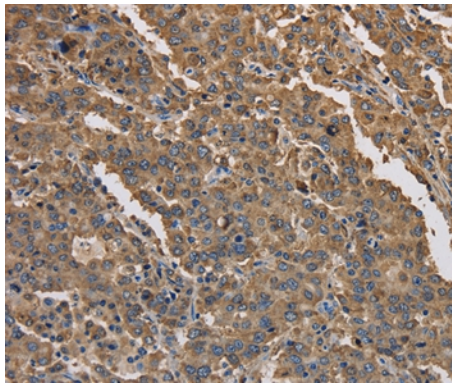
Application Details

Immunohistochemistry: 1:100-1:300

Images



Immunohistochemical analysis of paraffin-embedded Human colon cancer tissue using #37674 at dilution 1/40.



Immunohistochemical analysis of paraffin-embedded Human liver cancer tissue using #37674 at dilution 1/40.

Background

Voltage-gated potassium (Kv) channels represent the most complex class of voltage-gated ion channels from both functional and structural standpoints. Their diverse functions include regulating neurotransmitter release, heart rate, insulin secretion, neuronal excitability, epithelial electrolyte transport, smooth muscle contraction, and cell volume. This gene encodes a member of the potassium channel, voltage-gated, subfamily G. This gene is abundantly expressed in skeletal muscle. Multiple alternatively spliced transcript variants have been found in normal and cancerous tissues.

Note: This product is for in vitro research use only