

KCNMB3 Antibody

Catalog No: #37679

Orders: order@signalwayantibody.comSupport: tech@signalwayantibody.com

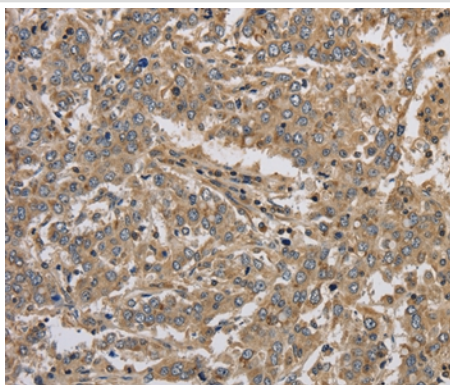
Description

Product Name	KCNMB3 Antibody
Host Species	Rabbit
Clonality	Polyclonal
Purification	Antigen affinity purification.
Applications	IHC
Species Reactivity	Hu
Specificity	The antibody detects endogenous levels of total KCNMB3 protein.
Immunogen Type	Peptide
Immunogen Description	Synthetic peptide corresponding to a region derived from internal residues of human potassium large conductance calcium-activated channel, subfamily M beta member 3
Target Name	KCNMB3
Other Names	HBETA3; KCNMB2; KCNMBL; BKBETA3; SLOBETA3
Accession No.	Swiss-Prot#: Q9NPA1NCBI Gene ID: 27094Gene Accssion: NP_055222
Uniprot	Q9NPA1
GeneID	27094;
Concentration	2.9mg/ml
Formulation	Rabbit IgG in pH7.4 PBS, 0.05% NaN ₃ , 40% Glycerol.
Storage	Store at -20°C

Application Details

Immunohistochemistry: 1:50-1:200

Images



Immunohistochemical analysis of paraffin-embedded Human liver cancer tissue using #37679 at dilution 1/40.

Background

MaxiK channels are large conductance, voltage and calcium-sensitive potassium channels which are fundamental to the control of smooth muscle tone and neuronal excitability. MaxiK channels can be formed by 2 subunits: the pore-forming alpha subunit and the modulatory beta subunit. The

protein encoded by this gene is an auxiliary beta subunit which may partially inactivate or slightly decrease the activation time of MaxiK alpha subunit currents. Alternative splicing results in multiple transcript variants. A related pseudogene has been identified on chromosome 22.

Note: This product is for in vitro research use only