

KDM5B Antibody

Catalog No: #37681

Orders: order@signalwayantibody.comSupport: tech@signalwayantibody.com

Description

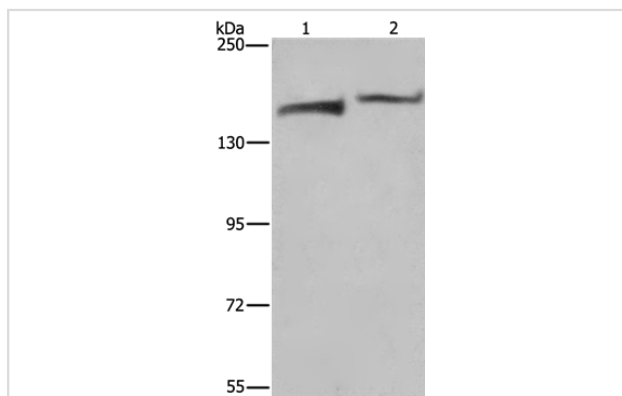
Product Name	KDM5B Antibody
Host Species	Rabbit
Clonality	Polyclonal
Purification	Antigen affinity purification.
Applications	WB IHC
Species Reactivity	Hu Ms
Specificity	The antibody detects endogenous levels of total KDM5B protein.
Immunogen Type	Peptide
Immunogen Description	Synthetic peptide corresponding to a region derived from internal residues of human lysine (K)-specific demethylase 5B
Target Name	KDM5B
Other Names	CT31; PLU1; PUT1; PLU-1; JARID1B; RBBP2H1A
Accession No.	Swiss-Prot#: Q9UGL1NCBI Gene ID: 10765Gene Accssion: NP_006609
Uniprot	Q9UGL1
GeneID	10765;
SDS-PAGE MW	176kd
Concentration	2.7mg/ml
Formulation	Rabbit IgG in pH7.4 PBS, 0.05% NaN ₃ , 40% Glycerol.
Storage	Store at -20°C

Application Details

Western blotting: 1:200-1:1000

Immunohistochemistry: 1:50-1:200

Images



Gel: 6%SDS-PAGE

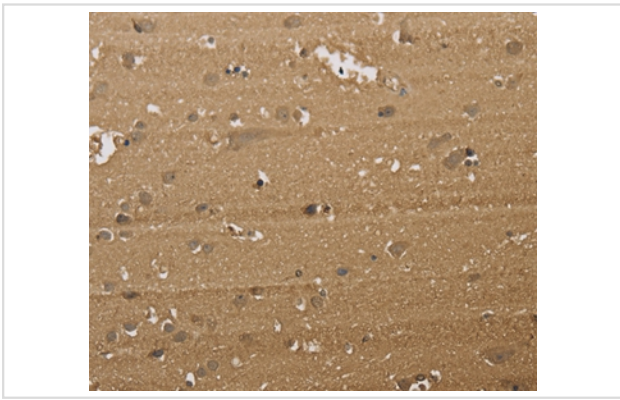
Lysates (from left to right): HeLa and MCF-7 cell

Amount of lysate: 40ug per lane

Primary antibody: 1/200 dilution

Secondary antibody dilution: 1/8000

Exposure time: 10 minutes



Immunohistochemical analysis of paraffin-embedded Human brain tissue using #37681 at dilution 1/40.

Background

PLU-1 is a large (1,544 amino acid) nuclear protein that interacts with brain factor-1 (BF-1) and paired box 9 (PAX9), both of which are developmental transcription factors. PLU-1 belongs to the testis-cancer antigen group of proteins and is a member of the ARID family of DNA binding proteins. It is a multi-domain protein with strong transcriptional repression properties. PLU-1 shows restricted expression in adult tissues, with high expression in testis and transient expression in the pregnant mammary gland. Both the PLU-1 gene and the PLU-1 protein product are specifically upregulated in breast cancer. PLU-1 may be important in meiotic transcription because of its apparent association with chromatin.

Note: This product is for in vitro research use only