

ELAVL2 Antibody

Catalog No: #37685

Orders: order@signalwayantibody.comSupport: tech@signalwayantibody.com

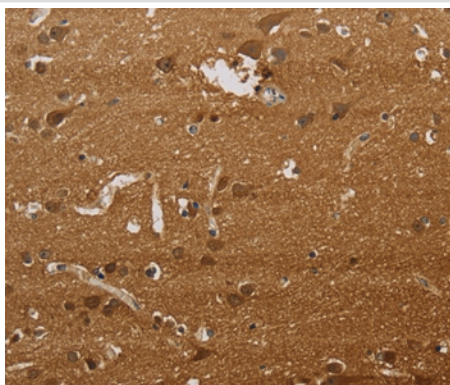
Description

Product Name	ELAVL2 Antibody
Host Species	Rabbit
Clonality	Polyclonal
Purification	Antigen affinity purification.
Applications	IHC
Species Reactivity	Hu Ms Rt
Specificity	The antibody detects endogenous levels of total ELAVL2 protein.
Immunogen Type	Peptide
Immunogen Description	Synthetic peptide corresponding to a region derived from internal residues of human ELAV like neuron-specific RNA binding protein 2
Target Name	ELAVL2
Other Names	HUB; HELN1; HEL-N1
Accession No.	Swiss-Prot#: Q12926NCBI Gene ID: 1993Gene Accssion: NP_004423
Uniprot	Q12926
GeneID	1993;
Concentration	2.6mg/ml
Formulation	Rabbit IgG in pH7.4 PBS, 0.05% NaN ₃ , 40% Glycerol.
Storage	Store at -20°C

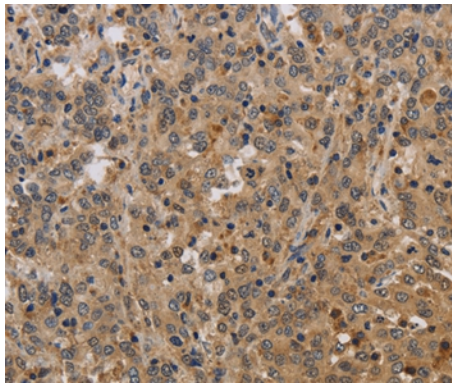
Application Details

Immunohistochemistry: 1:50-1:200

Images



Immunohistochemical analysis of paraffin-embedded Human brain tissue using #37685 at dilution 1/40.



Immunohistochemical analysis of paraffin-embedded Human liver cancer tissue using #37685 at dilution 1/40.

Background

The protein encoded by this gene is a neural-specific RNA-binding protein that is known to bind to several 3' UTRs, including its own and also that of FOS and ID. The encoded protein may recognize a GAAA motif in the RNA. Three transcript variants encoding two different isoforms have been found for this gene.

Note: This product is for in vitro research use only