

KLHL8 Antibody

Catalog No: #37687

Orders: order@signalwayantibody.comSupport: tech@signalwayantibody.com

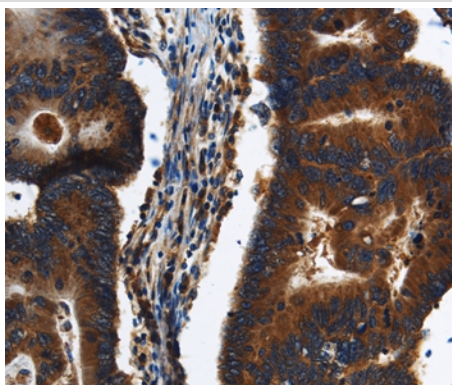
Description

Product Name	KLHL8 Antibody
Host Species	Rabbit
Clonality	Polyclonal
Purification	Antigen affinity purification.
Applications	IHC
Species Reactivity	Hu
Specificity	The antibody detects endogenous levels of total KLHL8 protein.
Immunogen Type	Peptide
Immunogen Description	Synthetic peptide corresponding to residues near the N terminal of human kelch-like family member 8
Target Name	KLHL8
Other Names	FLJ46304; kelch-like 8 (Drosophila); Kelch-like protein 8; KIAA1378; KLHL8
Accession No.	Swiss-Prot#: Q9P2G9NCBI Gene ID: 57563Gene Accssion: NP_065854
Uniprot	Q9P2G9
GeneID	57563;
Concentration	1.3mg/ml
Formulation	Rabbit IgG in pH7.4 PBS, 0.05% NaN ₃ , 40% Glycerol.
Storage	Store at -20°C

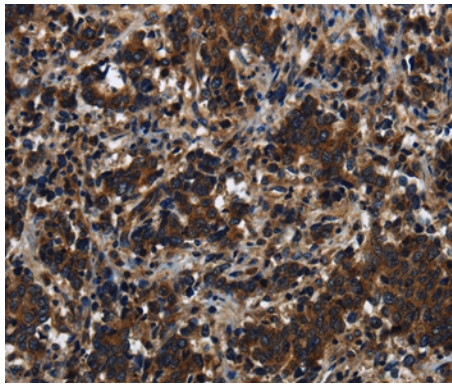
Application Details

Immunohistochemistry: 1:50-1:200

Images



Immunohistochemical analysis of paraffin-embedded Human colon cancer tissue using #37687 at dilution 1/20.



Immunohistochemical analysis of paraffin-embedded Human liver cancer tissue using #37687 at dilution 1/20.

Background

Kelch-like protein 8 is a protein that in humans is encoded by the *KLHL8* gene. The mRNA contains a repetitive element in its 3-prime UTR, and the deduced 451-amino acid protein shares 36% identity with the actin-binding protein MAYVEN. RT-PCR ELISA detected highest expression in adult brain, liver, skeletal muscle, kidney, and ovary, and in several specific brain regions, predominantly amygdala and thalamus. Moderate expression was detected in all other adult and fetal tissues examined.

Note: This product is for in vitro research use only