

## KLK14 Antibody

Catalog No: #37688

Orders: [order@signalwayantibody.com](mailto:order@signalwayantibody.com)Support: [tech@signalwayantibody.com](mailto:tech@signalwayantibody.com)

## Description

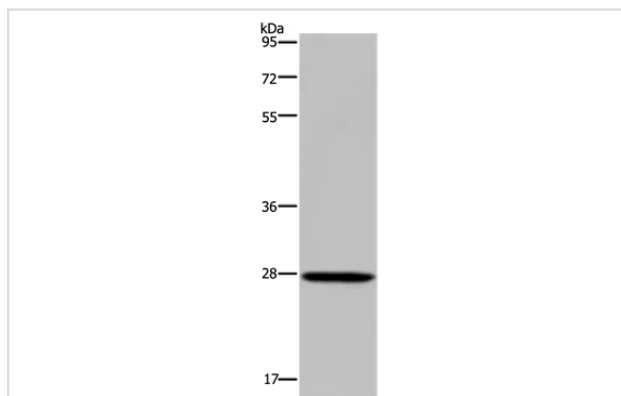
Product Name	KLK14 Antibody
Host Species	Rabbit
Clonality	Polyclonal
Purification	Antigen affinity purification.
Applications	WB IHC
Species Reactivity	Hu Ms
Specificity	The antibody detects endogenous levels of total KLK14 protein.
Immunogen Type	Peptide
Immunogen Description	Synthetic peptide corresponding to residues near the C terminal of human kallikrein-related peptidase 14
Target Name	KLK14
Other Names	KLK-L6
Accession No.	Swiss-Prot#: Q9P0G3NCBI Gene ID: 43847Gene Accssion: NP_071329
Uniprot	Q9P0G3
GeneID	43847;
SDS-PAGE MW	29kd
Concentration	2.7mg/ml
Formulation	Rabbit IgG in pH7.4 PBS, 0.05% NaN <sub>3</sub> , 40% Glycerol.
Storage	Store at -20°C

## Application Details

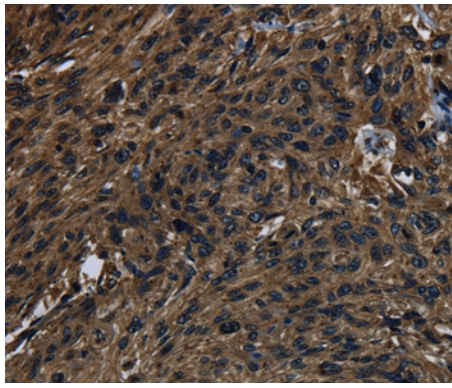
Western blotting: 1:200-1:1000

Immunohistochemistry: 1:50-1:200

## Images



Gel: 8%SDS-PAGE  
Lysates (from left to right): Mouse spleen tissue  
Amount of lysate: 40ug per lane  
Primary antibody: 1/300 dilution  
Secondary antibody dilution: 1/8000  
Exposure time: 3 minutes



Immunohistochemical analysis of paraffin-embedded Human esophagus cancer tissue using #37688 at dilution 1/40.

## Background

Kallikreins are a subgroup of serine proteases having diverse physiological functions. Growing evidence suggests that many kallikreins are implicated in carcinogenesis and some have potential as novel cancer and other disease biomarkers. This gene is one of the fifteen kallikrein subfamily members located in a cluster on chromosome 19. An additional transcript variant has been described but its full length nature has not been determined.

Note: This product is for in vitro research use only