

KLLN Antibody

Catalog No: #37689

Orders: order@signalwayantibody.com

Support: tech@signalwayantibody.com

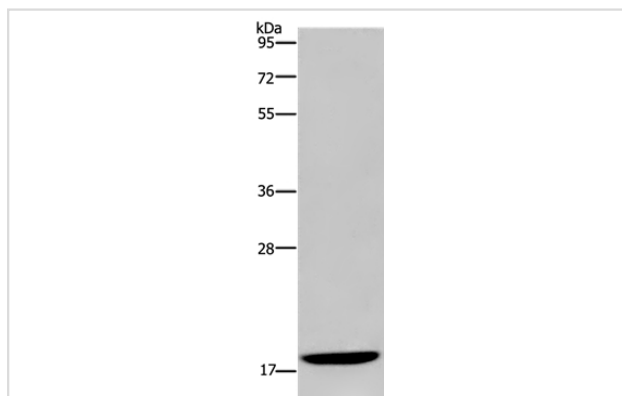
Description

Product Name	KLLN Antibody
Host Species	Rabbit
Clonality	Polyclonal
Purification	Antigen affinity purification.
Applications	WB
Species Reactivity	Hu
Specificity	The antibody detects endogenous levels of total KLLN protein.
Immunogen Type	Peptide
Immunogen Description	Synthetic peptide corresponding to residues near the C terminal of human killin, p53-regulated DNA replication inhibitor
Target Name	KLLN
Other Names	CWS4; KILLIN
Accession No.	Swiss-Prot#: B2CW77NCBI Gene ID: 100144748Gene Accssion: NP_001119521
Uniprot	B2CW77
GeneID	100144748;
SDS-PAGE MW	20kd
Concentration	2.7mg/ml
Formulation	Rabbit IgG in pH7.4 PBS, 0.05% NaN ₃ , 40% Glycerol.
Storage	Store at -20°C

Application Details

Western blotting: 1:500-1:2000

Images



Gel: 10%SDS-PAGE
 Lysate: 40ug Hela cell
 Primary antibody: 1/350 dilution
 Secondary antibody dilution: 1/8000
 Exposure time: 2 minutes

Background

The protein encoded by this intronless gene is found in the nucleus, where it can inhibit DNA synthesis and promote S phase arrest coupled to

apoptosis. The expression of this DNA binding protein is upregulated by transcription factor p53.?

Note: This product is for in vitro research use only