

KLRF1 Antibody

Catalog No: #37690

Orders: order@signalwayantibody.com

Support: tech@signalwayantibody.com

Description

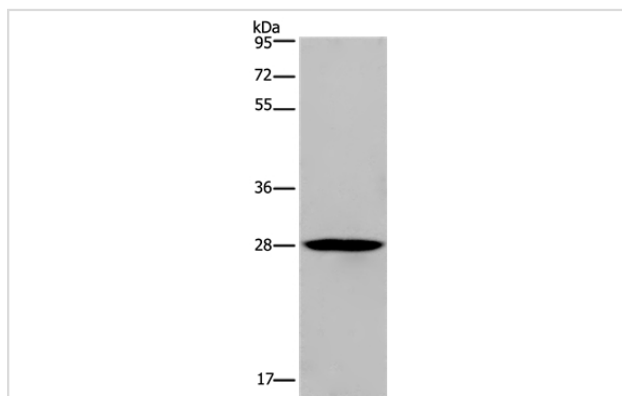
Product Name	KLRF1 Antibody
Host Species	Rabbit
Clonality	Polyclonal
Purification	Antigen affinity purification.
Applications	WB IHC
Species Reactivity	Hu
Specificity	The antibody detects endogenous levels of total KLRF1 protein.
Immunogen Type	Peptide
Immunogen Description	Synthetic peptide corresponding to a region derived from internal residues of human killer cell lectin-like receptor subfamily F, member 1
Target Name	KLRF1
Other Names	NKp80; CLEC5C
Accession No.	Swiss-Prot#: Q9NZS2NCBI Gene ID: 51348Gene Accssion: NP_057607
Uniprot	Q9NZS2
GeneID	51348;
SDS-PAGE MW	27kd
Concentration	2.2mg/ml
Formulation	Rabbit IgG in pH7.4 PBS, 0.05% NaN ₃ , 40% Glycerol.
Storage	Store at -20°C

Application Details

Western blotting: 1:500-1:2000

Immunohistochemistry: 1:50-1:200

Images



Gel: 10%SDS-PAGE

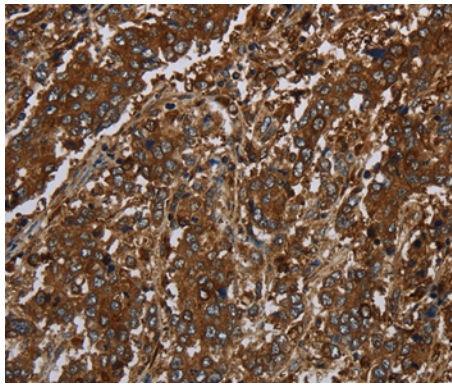
Lysates (from left to right): Human bladder carcinoma tissue

Amount of lysate: 40ug per lane

Primary antibody: 1/300 dilution

Secondary antibody dilution: 1/8000

Exposure time: 2 minutes



Immunohistochemical analysis of paraffin-embedded Human liver cancer tissue using #37690 at dilution 1/30.

Background

KLRF1, an activating homodimeric C-type lectin-like receptor (CTLR), is expressed on nearly all natural killer (NK) cells and stimulates their cytotoxicity and cytokine release

Note: This product is for in vitro research use only