

PRDM2 Antibody

Catalog No: #37691

Orders: order@signalwayantibody.com

Support: tech@signalwayantibody.com

Description

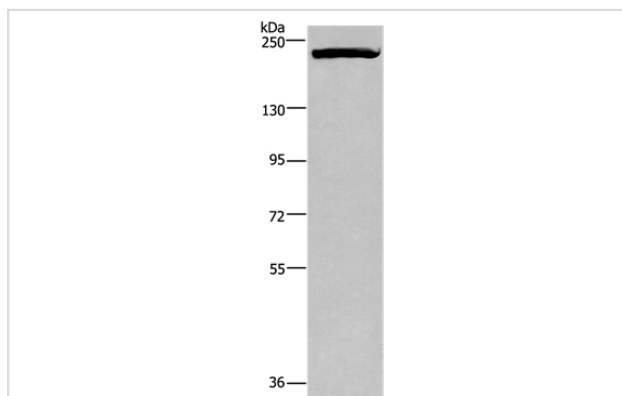
Product Name	PRDM2 Antibody
Host Species	Rabbit
Clonality	Polyclonal
Purification	Antigen affinity purification.
Applications	WB IHC
Species Reactivity	Hu
Specificity	The antibody detects endogenous levels of total PRDM2 protein.
Immunogen Type	Peptide
Immunogen Description	Synthetic peptide corresponding to residues near the N terminal of human PR domain containing 2, with ZNF domain
Target Name	PRDM2
Other Names	RIZ; KMT8; RIZ1; RIZ2; MTB-ZF; HUMHOXY1
Accession No.	Swiss-Prot#: Q13029NCBI Gene ID: 7799Gene Accssion: NP_036363
Uniprot	Q13029
GeneID	7799;
SDS-PAGE MW	189kd
Concentration	1.8mg/ml
Formulation	Rabbit IgG in pH7.4 PBS, 0.05% NaN ₃ , 40% Glycerol.
Storage	Store at -20°C

Application Details

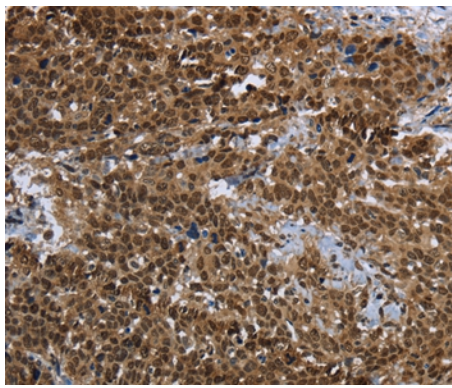
Western blotting: 1:200-1:1000

Immunohistochemistry: 1:50-1:200

Images



Gel: 6%SDS-PAGE
 Lysate: 40ug MCF-7 cell
 Primary antibody: 1/200 dilution
 Secondary antibody dilution: 1/8000
 Exposure time: 1 minute



Immunohistochemical analysis of paraffin-embedded Human cervical cancer tissue using #37691 at dilution 1/25.

Background

This tumor suppressor gene is a member of a nuclear histone/protein methyltransferase superfamily. It encodes a zinc finger protein that can bind to retinoblastoma protein, estrogen receptor, and the TPA-responsive element (MTE) of the heme-oxygenase-1 gene. Although the functions of this protein have not been fully characterized, it may (1) play a role in transcriptional regulation during neuronal differentiation and pathogenesis of retinoblastoma, (2) act as a transcriptional activator of the heme-oxygenase-1 gene, and (3) be a specific effector of estrogen action. Multiple transcript variants encoding different isoforms have been found for this gene.

Note: This product is for in vitro research use only