

## ANP32E Antibody

Catalog No: #37693

Orders: order@signalwayantibody.com

Support: tech@signalwayantibody.com

## Description

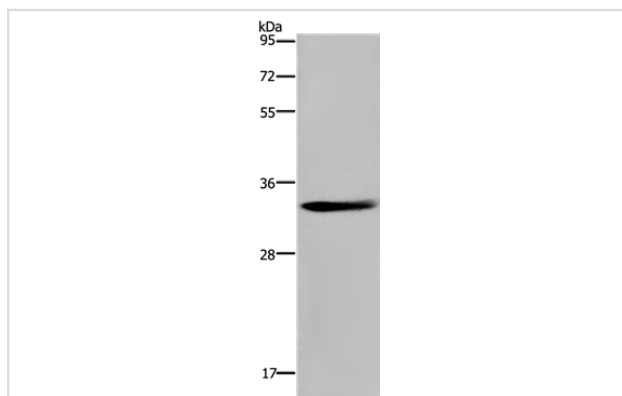
Product Name	ANP32E Antibody
Host Species	Rabbit
Clonality	Polyclonal
Purification	Antigen affinity purification.
Applications	WB IHC
Species Reactivity	Hu Ms
Specificity	The antibody detects endogenous levels of total ANP32E protein.
Immunogen Type	Peptide
Immunogen Description	Synthetic peptide corresponding to residues near the C terminal of human acidic (leucine-rich) nuclear phosphoprotein 32 family, member E
Target Name	ANP32E
Other Names	LANPL; LANP-L
Accession No.	Swiss-Prot#: Q9BTT0NCBI Gene ID: 81611Gene Accsson: NP_112182
Uniprot	Q9BTT0
GeneID	81611;
SDS-PAGE MW	31kd
Concentration	1.2mg/ml
Formulation	Rabbit IgG in pH7.4 PBS, 0.05% NaN <sub>3</sub> , 40% Glycerol.
Storage	Store at -20°C

## Application Details

Western blotting: 1:500-1:2000

Immunohistochemistry: 1:50-1:200

## Images



Gel: 10%SDS-PAGE

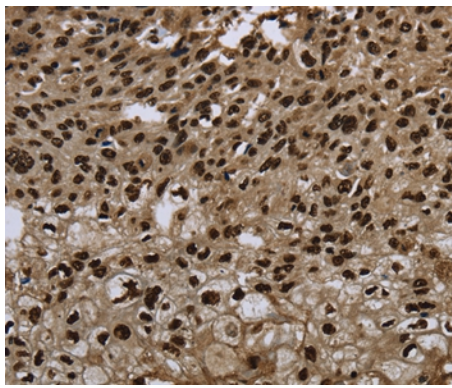
Lysates (from left to right): Mouse thymus tissue

Amount of lysate: 40ug per lane

Primary antibody: 1/300 dilution

Secondary antibody dilution: 1/8000

Exposure time: 20 seconds



Immunohistochemical analysis of paraffin-embedded Human esophagus cancer tissue using #37693 at dilution 1/20.

## Background

The Anp32 family consists of 32 evolutionarily-conserved proteins and is included within the superfamily of leucine-rich repeat (LRR) proteins. Leucine-rich acidic nuclear protein-like (LANPL), also called ANP32E or Cpd1, is a member of the Anp32 family. LANPL is located in the cytoplasm of peripheral blood leukocytes, colon, small intestine, prostate, thymus, spleen, skeletal muscle, liver and kidney. It has also been detected in the nucleus, cytoplasm and membrane of multiple brain regions. Upon phosphorylation, LANPL colocalizes and inhibits protein phosphatase 2A (PP2A), but does not inhibit PP1. LANPL modulates cell signalling and transduction of gene expression to regulate the morphology and dynamics of the cytoskeleton, cell adhesion, neural development and cerebellar morphogenesis.

Note: This product is for in vitro research use only