

ARHGEF12 Antibody

Catalog No: #37694

Orders: order@signalwayantibody.comSupport: tech@signalwayantibody.com

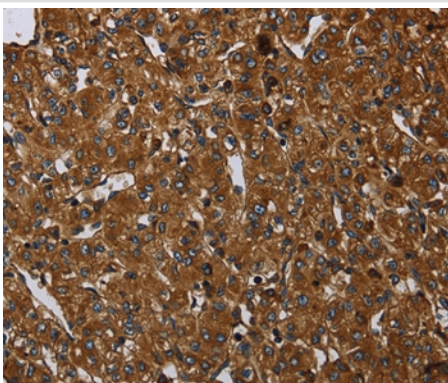
Description

Product Name	ARHGEF12 Antibody
Host Species	Rabbit
Clonality	Polyclonal
Purification	Antigen affinity purification.
Applications	IHC
Species Reactivity	Hu
Specificity	The antibody detects endogenous levels of total ARHGEF12 protein.
Immunogen Type	Peptide
Immunogen Description	Synthetic peptide corresponding to a region derived from internal residues of human Rho guanine nucleotide exchange factor (GEF) 12
Target Name	ARHGEF12
Other Names	LARG; PRO2792
Accession No.	Swiss-Prot#: Q9NZN5NCBI Gene ID: 23365Gene Accssion: NP_056128
Uniprot	Q9NZN5
GeneID	23365;
Concentration	1.2mg/ml
Formulation	Rabbit IgG in pH7.4 PBS, 0.05% NaN ₃ , 40% Glycerol.
Storage	Store at -20°C

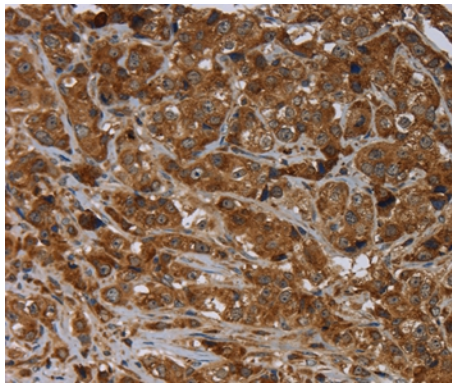
Application Details

Immunohistochemistry: 1:25-1:100

Images



Immunohistochemical analysis of paraffin-embedded Human prostate cancer tissue using #37694 at dilution 1/20.



Immunohistochemical analysis of paraffin-embedded Human breast cancer tissue using #37694 at dilution 1/20.

Background

Rho GTPases play a fundamental role in numerous cellular processes that are initiated by extracellular stimuli working through G protein-coupled receptors. The encoded protein may form a complex with G proteins and stimulate Rho-dependent signals. This protein has been observed to form a myeloid/lymphoid fusion partner in acute myeloid leukemia. Two transcript variants encoding different isoforms have been found for this gene.

Note: This product is for in vitro research use only