

LEO1 Antibody

Catalog No: #37702

Orders: order@signalwayantibody.comSupport: tech@signalwayantibody.com

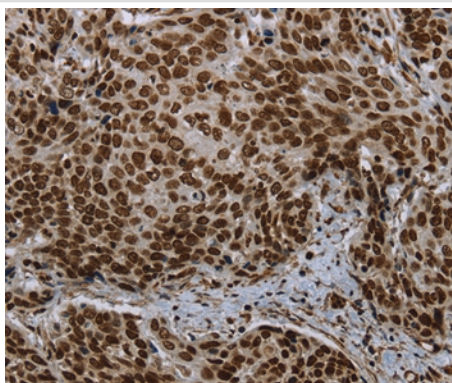
Description

Product Name	LEO1 Antibody
Host Species	Rabbit
Clonality	Polyclonal
Purification	Antigen affinity purification.
Applications	IHC
Species Reactivity	Hu
Specificity	The antibody detects endogenous levels of total LEO1 protein.
Immunogen Type	Peptide
Immunogen Description	Synthetic peptide corresponding to residues near the N terminal of human Leo1, Paf1/RNA polymerase II complex component, homolog
Target Name	LEO1
Other Names	RDL
Accession No.	Swiss-Prot#: Q8WVC0NCBI Gene ID: 123169Gene Accssion: NP_620147
Uniprot	Q8WVC0
GeneID	123169;
Concentration	1.4mg/ml
Formulation	Rabbit IgG in pH7.4 PBS, 0.05% NaN ₃ , 40% Glycerol.
Storage	Store at -20°C

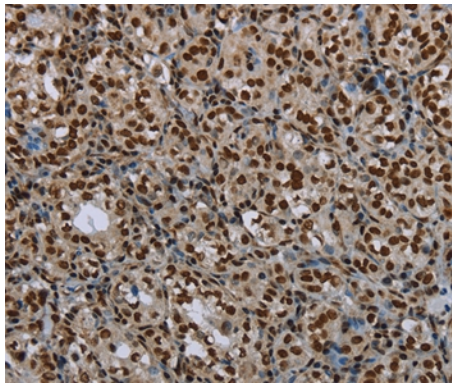
Application Details

Immunohistochemistry: 1:25-1:100

Images



Immunohistochemical analysis of paraffin-embedded Human cervical cancer tissue using #37702 at dilution 1/20.



Immunohistochemical analysis of paraffin-embedded Human thyroid cancer tissue using #37702 at dilution 1/20.

Background

LEO1, parafibromin (CDC73; MIM 607393), CTR9 (MIM 609366), and PAF1 (MIM 610506) form the PAF protein complex that associates with the RNA polymerase II subunit POLR2A (MIM 180660) and with a histone methyltransferase complex?

Note: This product is for in vitro research use only