

LGR4 Antibody

Catalog No: #37703

Orders: order@signalwayantibody.comSupport: tech@signalwayantibody.com

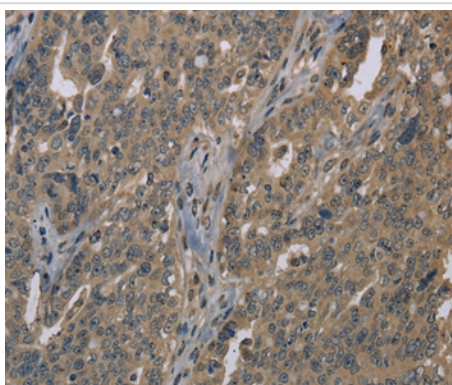
Description

Product Name	LGR4 Antibody
Host Species	Rabbit
Clonality	Polyclonal
Purification	Antigen affinity purification.
Applications	IHC
Species Reactivity	Hu
Specificity	The antibody detects endogenous levels of total LGR4 protein.
Immunogen Type	Peptide
Immunogen Description	Synthetic peptide corresponding to a region derived from internal residues of human leucine-rich repeat containing G protein-coupled receptor 4
Target Name	LGR4
Other Names	GPR48; BNMD17
Accession No.	Swiss-Prot#: Q9BXB1NCBI Gene ID: 55366Gene Accsson: NP_060960
Uniprot	Q9BXB1
GeneID	55366;
Concentration	0.9mg/ml
Formulation	Rabbit IgG in pH7.4 PBS, 0.05% NaN ₃ , 40% Glycerol.
Storage	Store at -20°C

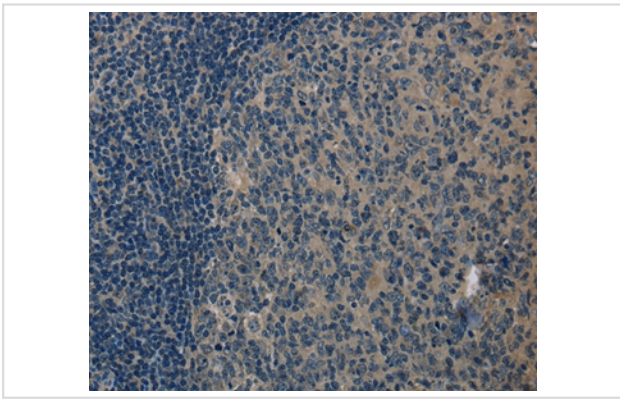
Application Details

Immunohistochemistry: 1:25-1:100

Images



Immunohistochemical analysis of paraffin-embedded Human ovarian cancer tissue using #37703 at dilution 1/20.



Immunohistochemical analysis of paraffin-embedded Human tonsil tissue using #37703 at dilution 1/20.

Background

G protein-coupled receptors (GPCRs) play key roles in a variety of physiologic functions. Members of the leucine-rich GPCR (LGR) family, such as GPR48, have multiple N-terminal leucine-rich repeats (LRRs) and a 7-transmembrane domain

Note: This product is for in vitro research use only