

SCGB1D2 Antibody

Catalog No: #37704

Orders: order@signalwayantibody.comSupport: tech@signalwayantibody.com

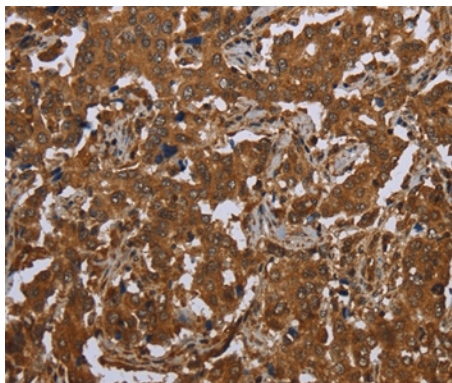
Description

Product Name	SCGB1D2 Antibody
Host Species	Rabbit
Clonality	Polyclonal
Purification	Antigen affinity purification.
Applications	IHC
Species Reactivity	Hu
Specificity	The antibody detects endogenous levels of total SCGB1D2 protein.
Immunogen Type	Peptide
Immunogen Description	Synthetic peptide corresponding to residues near the C terminal of human secretoglobin, family 1D, member 2
Target Name	SCGB1D2
Other Names	LIPB; LPHB; LPNB
Accession No.	Swiss-Prot#: O95969NCBI Gene ID: 10647Gene Accssion: NP_006542
Uniprot	O95969
GeneID	10647;
Concentration	2.7mg/ml
Formulation	Rabbit IgG in pH7.4 PBS, 0.05% NaN ₃ , 40% Glycerol.
Storage	Store at -20°C

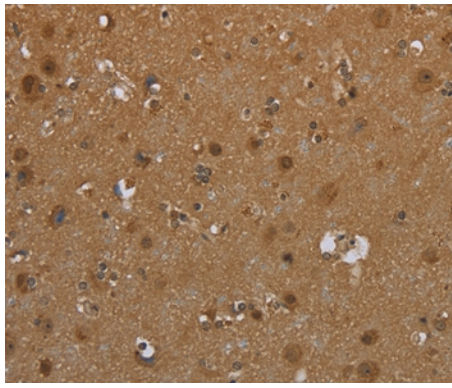
Application Details

Immunohistochemistry: 1:50-1:200

Images



Immunohistochemical analysis of paraffin-embedded Human liver cancer tissue using #37704 at dilution 1/40.



Immunohistochemical analysis of paraffin-embedded Human brain tissue using #37704 at dilution 1/40.

Background

The protein encoded by this gene is a member of the lipophilin subfamily, part of the uteroglobin superfamily, and is an ortholog of prostatein, the major secretory glycoprotein of the rat ventral prostate gland. Lipophilin gene products are widely expressed in normal tissues, especially in endocrine-responsive organs. Assuming that human lipophilins are the functional counterparts of prostatein, they may be transcriptionally regulated by steroid hormones, with the ability to bind androgens, other steroids and possibly bind and concentrate estramustine, a chemotherapeutic agent widely used for prostate cancer. Although the gene has been reported to be on chromosome 10, this sequence appears to be from a cluster of genes on chromosome 11 that includes mammaglobin 2.

Note: This product is for in vitro research use only