

LOXL1 Antibody

Catalog No: #37706

Orders: order@signalwayantibody.com

Support: tech@signalwayantibody.com

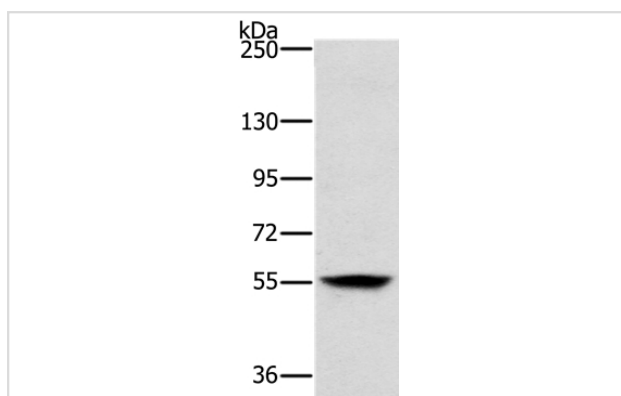
Description

Product Name	LOXL1 Antibody
Host Species	Rabbit
Clonality	Polyclonal
Purification	Antigen affinity purification.
Applications	WB
Species Reactivity	Hu Ms
Specificity	The antibody detects endogenous levels of total LOXL1 protein.
Immunogen Type	Peptide
Immunogen Description	Synthetic peptide corresponding to residues near the C terminal of human lysyl oxidase-like 1
Target Name	LOXL1
Other Names	LOL; LOXL
Accession No.	Swiss-Prot#: Q08397NCBI Gene ID: 4016Gene Accssion: NP_005567/Q08397
Uniprot	Q08397
GeneID	4016;
SDS-PAGE MW	63kd
Concentration	2.3mg/ml
Formulation	Rabbit IgG in pH7.4 PBS, 0.05% NaN ₃ , 40% Glycerol.
Storage	Store at -20°C

Application Details

Western blotting: 1:200-1:1000

Images



Gel: 6%SDS-PAGE
 Lysates (from left to right): Mouse skin tissue
 Amount of lysate: 40ug per lane
 Primary antibody: 1/200 dilution
 Secondary antibody dilution: 1/8000
 Exposure time: 5 minutes

Background

This gene encodes a member of the lysyl oxidase gene family. The prototypic member of the family is essential to the biogenesis of connective tissue, encoding an extracellular copper-dependent amine oxidase that catalyses the first step in the formation of crosslinks in collagens and elastin. A highly

conserved amino acid sequence at the C-terminus end appears to be sufficient for amine oxidase activity, suggesting that each family member may retain this function. The N-terminus is poorly conserved and may impart additional roles in developmental regulation, senescence, tumor suppression, cell growth control, and chemotaxis to each member of the family.?

Note: This product is for in vitro research use only