

MAL Antibody

Catalog No: #37714

Orders: order@signalwayantibody.comSupport: tech@signalwayantibody.com

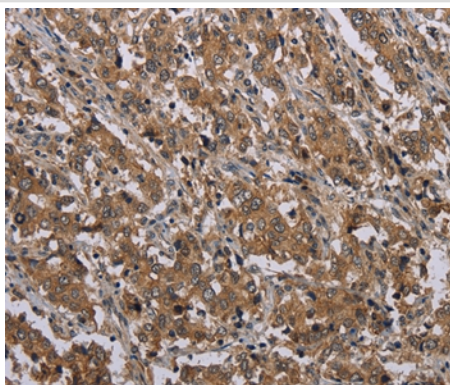
Description

Product Name	MAL Antibody
Host Species	Rabbit
Clonality	Polyclonal
Purification	Antigen affinity purification.
Applications	IHC
Species Reactivity	Hu
Specificity	The antibody detects endogenous levels of total MAL protein.
Immunogen Type	Peptide
Immunogen Description	Synthetic peptide corresponding to a region derived from internal residues of human mal, T-cell differentiation protein
Target Name	MAL
Other Names	MAL; mal; T-cell differentiation protein; P21145;
Accession No.	Swiss-Prot#: P21145NCBI Gene ID: 4118Gene Accssion: NP_002362
Uniprot	P21145
GeneID	4118;
Concentration	1.8mg/ml
Formulation	Rabbit IgG in pH7.4 PBS, 0.05% NaN ₃ , 40% Glycerol.
Storage	Store at -20°C

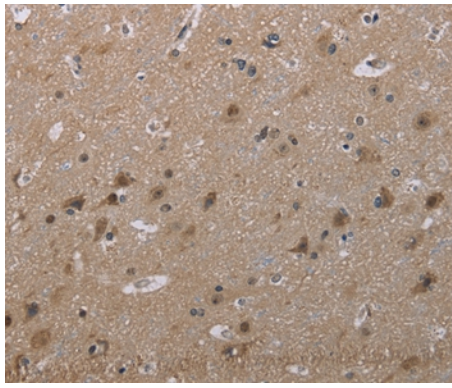
Application Details

Immunohistochemistry: 1:50-1:200

Images



Immunohistochemical analysis of paraffin-embedded Human liver cancer tissue using #37714 at dilution 1/30.



Immunohistochemical analysis of paraffin-embedded Human brain tissue using #37714 at dilution 1/30.

Background

The protein encoded by this gene is a highly hydrophobic integral membrane protein belonging to the MAL family of proteolipids. The protein has been localized to the endoplasmic reticulum of T-cells and is a candidate linker protein in T-cell signal transduction. In addition, this proteolipid is localized in compact myelin of cells in the nervous system and has been implicated in myelin biogenesis and/or function. The protein plays a role in the formation, stabilization and maintenance of glycosphingolipid-enriched membrane microdomains. Down-regulation of this gene has been associated with a variety of human epithelial malignancies. Alternative splicing produces four transcript variants which vary from each other by the presence or absence of alternatively spliced exons 2 and 3.

Note: This product is for in vitro research use only