

MAPKAPK2 Antibody

Catalog No: #37715

Orders: order@signalwayantibody.com

Support: tech@signalwayantibody.com

Description

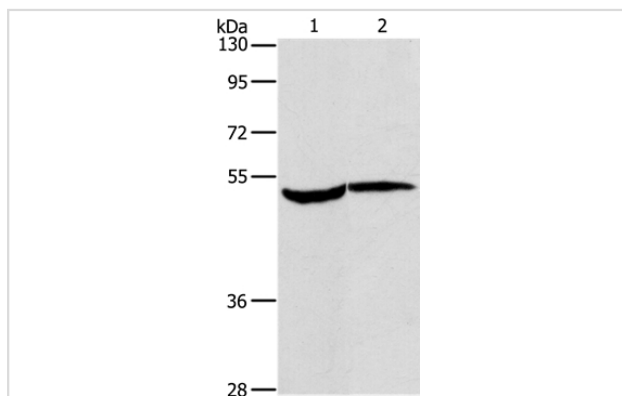
Product Name	MAPKAPK2 Antibody
Host Species	Rabbit
Clonality	Polyclonal
Purification	Antigen affinity purification.
Applications	WB IHC
Species Reactivity	Hu Ms
Specificity	The antibody detects endogenous levels of total MAPKAPK2 protein.
Immunogen Type	Peptide
Immunogen Description	Synthetic peptide corresponding to a region derived from internal residues of human mitogen-activated protein kinase-activated protein kinase 2
Target Name	MAPKAPK2
Other Names	MK2; MK-2; MAPKAP-K2
Accession No.	Swiss-Prot#: P49137NCBI Gene ID: 9261Gene Accssion: NP_116584/P49137
Uniprot	P49137
GeneID	9261;
SDS-PAGE MW	46kd
Concentration	1.3mg/ml
Formulation	Rabbit IgG in pH7.4 PBS, 0.05% NaN ₃ , 40% Glycerol.
Storage	Store at -20°C

Application Details

Western blotting: 1:200-1:1000

Immunohistochemistry: 1:25-1:100

Images



Gel: 8%SDS-PAGE

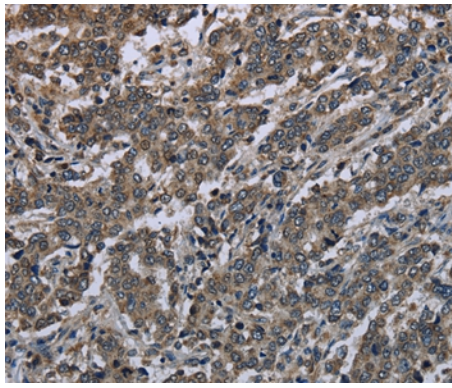
Lysates (from left to right): Human chromaffin cell tumor tissue and A431 cell

Amount of lysate: 40ug per lane

Primary antibody: 1/350 dilution

Secondary antibody dilution: 1/8000

Exposure time: 6 minutes



Immunohistochemical analysis of paraffin-embedded Human liver cancer tissue using #37715 at dilution 1/20.

Background

This gene encodes a member of the Ser/Thr protein kinase family. This kinase is regulated through direct phosphorylation by p38 MAP kinase. In conjunction with p38 MAP kinase, this kinase is known to be involved in many cellular processes including stress and inflammatory responses, nuclear export, gene expression regulation and cell proliferation. Heat shock protein HSP27 was shown to be one of the substrates of this kinase in vivo. Two transcript variants encoding two different isoforms have been found for this gene.

Note: This product is for in vitro research use only