

MARVELD1 Antibody

Catalog No: #37717

Orders: order@signalwayantibody.com

Support: tech@signalwayantibody.com

Description

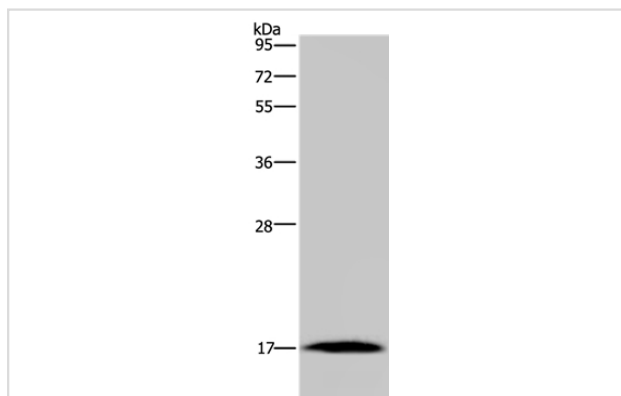
Product Name	MARVELD1 Antibody
Host Species	Rabbit
Clonality	Polyclonal
Purification	Antigen affinity purification.
Applications	WB IHC
Species Reactivity	Hu Ms
Specificity	The antibody detects endogenous levels of total MARVELD1 protein.
Immunogen Type	Peptide
Immunogen Description	Synthetic peptide corresponding to residues near the N terminal of human MARVEL domain containing 1
Target Name	MARVELD1
Other Names	GB14; MARVD1; MRVLDC1; bA548K23.8
Accession No.	Swiss-Prot#: Q9BSK0NCBI Gene ID: 83742Gene Accssion: NP_113672
Uniprot	Q9BSK0
GeneID	83742;
SDS-PAGE MW	19kd
Concentration	1.2mg/ml
Formulation	Rabbit IgG in pH7.4 PBS, 0.05% NaN ₃ , 40% Glycerol.
Storage	Store at -20°C

Application Details

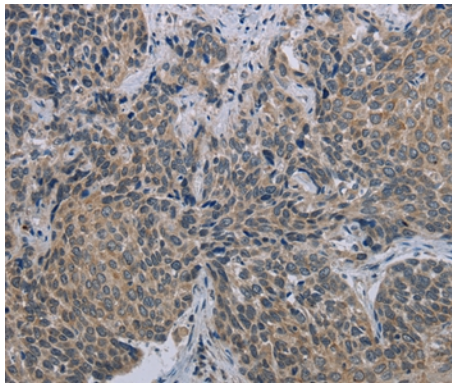
Western blotting: 1:200-1:1000

Immunohistochemistry: 1:50-1:200

Images



Gel: 10%SDS-PAGE
 Lysates (from left to right): Mouse heart tissue
 Amount of lysate: 40ug per lane
 Primary antibody: 1/300 dilution
 Secondary antibody dilution: 1/8000
 Exposure time: 10 minutes



Immunohistochemical analysis of paraffin-embedded Human cervical cancer tissue using #37717 at dilution 1/40.

Background

MARVELD1 (MARVEL domain containing 1), also known as GB14, MARVD1 or MRVLDC1, is a 173 amino acid protein that is widely expressed and contains one MARVEL (MAL and related proteins for vesicle trafficking and membrane link) domain. The MARVEL domain, which is common in Occludin proteins, is a 130 amino acid motif that contains four transmembrane helices, both of which have cytoplasmic N- and C-terminal regions. Localizing to the nucleus, MARVELD1 is downregulated in primary multiple tumors of liver, bladder, ovary, vulva, breast, testis, uterus, kidney and testis. The gene encoding MARVELD1 maps to human chromosome 10, which makes up approximately 4.5% of total DNA in cells and encodes nearly 1,200 genes. Defects in some of the genes that map to chromosome 10 are associated with Charcot-Marie Tooth disease, Jackson-Weiss syndrome, Usher syndrome, nonsyndromic deafness, WolmanB'B—s syndrome and Cowden syndrome.

Note: This product is for in vitro research use only