

MEIS1 Antibody

Catalog No: #37722

Orders: order@signalwayantibody.comSupport: tech@signalwayantibody.com

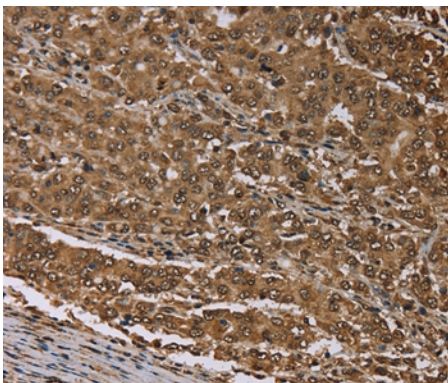
Description

Product Name	MEIS1 Antibody
Host Species	Rabbit
Clonality	Polyclonal
Purification	Antigen affinity purification.
Applications	IHC
Species Reactivity	Hu Ms
Specificity	The antibody detects endogenous levels of total MEIS1 protein.
Immunogen Type	Peptide
Immunogen Description	Synthetic peptide corresponding to a region derived from internal residues of human Meis homeobox 1
Target Name	MEIS1
Other Names	Homeobox protein Meis1; Meis homeobox 1; MEIS1;
Accession No.	Swiss-Prot#: O00470NCBI Gene ID: 4211Gene Accssion: NP_002389
Uniprot	O00470
GeneID	4211;
Concentration	0.7 mg/ml
Formulation	Rabbit IgG in pH7.4 PBS, 0.05% NaN ₃ , 40% Glycerol.
Storage	Store at -20°C

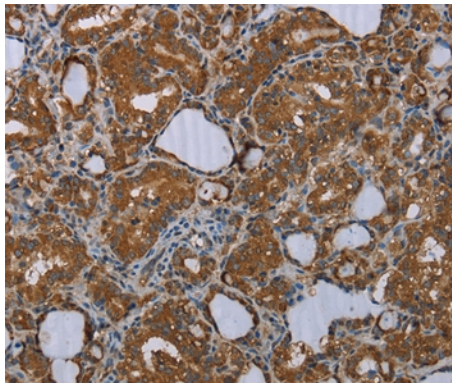
Application Details

Immunohistochemistry: 1:50-1:200

Images



Immunohistochemical analysis of paraffin-embedded Human liver cancer tissue using #37722 at dilution 1/30.



Immunohistochemical analysis of paraffin-embedded Human thyroid cancer tissue using #37722 at dilution 1/30.

Background

Homeobox genes, of which the most well-characterized category is represented by the HOX genes, play a crucial role in normal development. In addition, several homeoproteins are involved in neoplasia. This gene encodes a homeobox protein belonging to the TALE ('three amino acid loop extension') family of homeodomain-containing proteins.

Note: This product is for in vitro research use only