

MFF Antibody

Catalog No: #37723

Orders: order@signalwayantibody.comSupport: tech@signalwayantibody.com

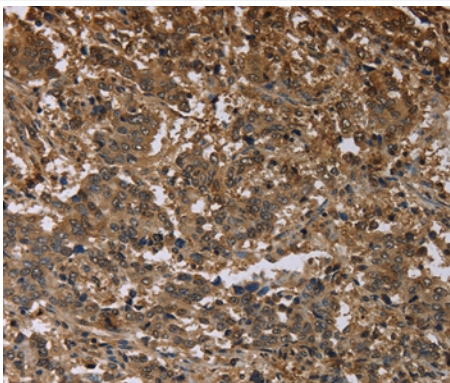
Description

Product Name	MFF Antibody
Host Species	Rabbit
Clonality	Polyclonal
Purification	Antigen affinity purification.
Applications	IHC
Species Reactivity	Hu Ms Rt
Specificity	The antibody detects endogenous levels of total MFF protein.
Immunogen Type	Peptide
Immunogen Description	Synthetic peptide corresponding to a region derived from internal residues of human mitochondrial fission factor
Target Name	MFF
Other Names	GL004; C2orf33
Accession No.	Swiss-Prot#: Q9GZY8NCBI Gene ID: 56947Gene Accssion: NP_064579
Uniprot	Q9GZY8
GeneID	56947;
Concentration	1.8mg/ml
Formulation	Rabbit IgG in pH7.4 PBS, 0.05% NaN ₃ , 40% Glycerol.
Storage	Store at -20°C

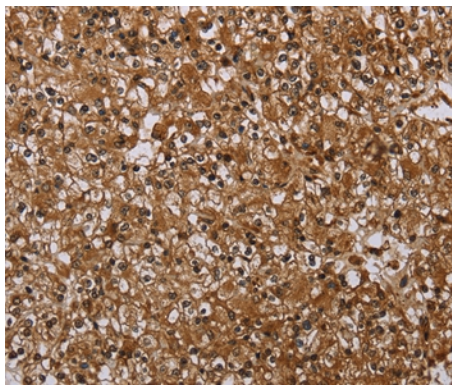
Application Details

Immunohistochemistry: 1:25-1:100

Images



Immunohistochemical analysis of paraffin-embedded Human liver cancer tissue using #37723 at dilution 1/25.



Immunohistochemical analysis of paraffin-embedded Human prostate cancer tissue using #37723 at dilution 1/25.

Background

This is a nuclear gene encoding a protein that functions in mitochondrial and peroxisomal fission. The encoded protein recruits dynamin-1-like protein (DNM1L) to mitochondria. There are multiple pseudogenes for this gene on chromosomes 1, 5, and X. Alternative splicing results in multiple transcript variants.

Note: This product is for in vitro research use only