

TBX5 Antibody

Catalog No: #37725

Orders: order@signalwayantibody.comSupport: tech@signalwayantibody.com

Description

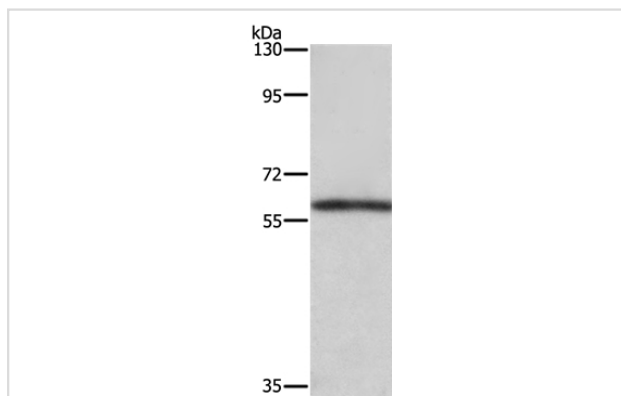
Product Name	TBX5 Antibody
Host Species	Rabbit
Clonality	Polyclonal
Purification	Antigen affinity purification.
Applications	WB IHC
Species Reactivity	Hu Ms
Specificity	The antibody detects endogenous levels of total TBX5 protein.
Immunogen Type	Peptide
Immunogen Description	Synthetic peptide corresponding to a region derived from internal residues of human T-box 5
Target Name	TBX5
Other Names	HOS
Accession No.	Swiss-Prot#: Q99593NCBI Gene ID: 6910Gene Accssion: NP_000183
Uniprot	Q99593
GeneID	6910;
SDS-PAGE MW	58kd
Concentration	2.3mg/ml
Formulation	Rabbit IgG in pH7.4 PBS, 0.05% NaN ₃ , 40% Glycerol.
Storage	Store at -20°C

Application Details

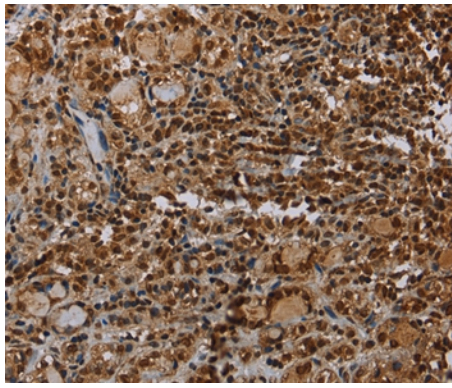
Western blotting: 1:200-1:1000

Immunohistochemistry: 1:50-1:200

Images



Gel: 8%SDS-PAGE
 Lysates (from left to right): Mouse kidney tissue
 Amount of lysate: 40ug per lane
 Primary antibody: 1/350 dilution
 Secondary antibody dilution: 1/8000
 Exposure time: 3 minutes



Immunohistochemical analysis of paraffin-embedded Human thyroid cancer tissue using #37725 at dilution 1/35.

Background

This gene is a member of a phylogenetically conserved family of genes that share a common DNA-binding domain, the T-box. T-box genes encode transcription factors involved in the regulation of developmental processes. This gene is closely linked to related family member T-box 3 (ulnar mammary syndrome) on human chromosome 12. The encoded protein may play a role in heart development and specification of limb identity. Mutations in this gene have been associated with Holt-Oram syndrome, a developmental disorder affecting the heart and upper limbs. Several transcript variants encoding different isoforms have been described for this gene.

Note: This product is for in vitro research use only