

## REG3A Antibody

Catalog No: #37727

Orders: [order@signalwayantibody.com](mailto:order@signalwayantibody.com)Support: [tech@signalwayantibody.com](mailto:tech@signalwayantibody.com)

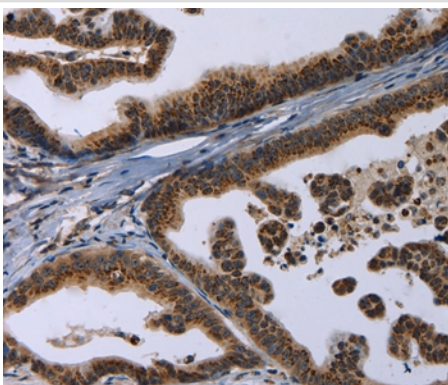
## Description

Product Name	REG3A Antibody
Host Species	Rabbit
Clonality	Polyclonal
Purification	Antigen affinity purification.
Applications	IHC
Species Reactivity	Hu
Specificity	The antibody detects endogenous levels of total REG3A protein.
Immunogen Type	Peptide
Immunogen Description	Synthetic peptide corresponding to a region derived from internal residues of human regenerating islet-derived 3 alpha
Target Name	REG3A
Other Names	HIP; PAP; PAP1; REG3; INGAP; PAP-H; PBCGF; HIP/PAP; REG-III
Accession No.	Swiss-Prot#: Q06141NCBI Gene ID: 5068Gene Accssion: NP_002571
Uniprot	Q06141
GeneID	5068;
Concentration	1mg/ml
Formulation	Rabbit IgG in pH7.4 PBS, 0.05% NaN <sub>3</sub> , 40% Glycerol.
Storage	Store at -20°C

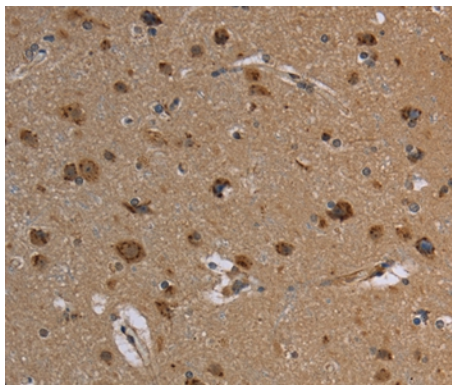
## Application Details

Immunohistochemistry: 1:25-1:100

## Images



Immunohistochemical analysis of paraffin-embedded Human gastric cancer tissue using #37727 at dilution 1/20.



Immunohistochemical analysis of paraffin-embedded Human brain tissue using #37727 at dilution 1/20.

## Background

This gene encodes a pancreatic secretory protein that may be involved in cell proliferation or differentiation. It has similarity to the C-type lectin superfamily. The enhanced expression of this gene is observed during pancreatic inflammation and liver carcinogenesis. Alternate splicing results in multiple transcript variants that encode the same protein.

Note: This product is for in vitro research use only