

## ATP2A1 Antibody

Catalog No: #37728

Orders: order@signalwayantibody.com

Support: tech@signalwayantibody.com

## Description

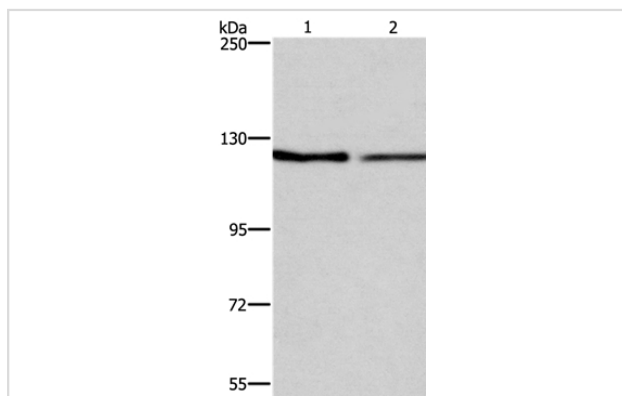
Product Name	ATP2A1 Antibody
Host Species	Rabbit
Clonality	Polyclonal
Purification	Antigen affinity purification.
Applications	WB IHC
Species Reactivity	Hu Ms
Specificity	The antibody detects endogenous levels of total ATP2A1 protein.
Immunogen Type	Peptide
Immunogen Description	Synthetic peptide corresponding to residues near the C terminal of human ATPase, Ca <sup>++</sup> transporting, cardiac muscle, fast twitch 1
Target Name	ATP2A1
Other Names	ATP2A; SERCA1
Accession No.	Swiss-Prot#: O14983NCBI Gene ID: 487Gene Accssion: NP_775293
Uniprot	O14983
GeneID	487;
SDS-PAGE MW	110kd
Concentration	2.2mg/ml
Formulation	Rabbit IgG in pH7.4 PBS, 0.05% NaN <sub>3</sub> , 40% Glycerol.
Storage	Store at -20°C

## Application Details

Western blotting: 1:200-1:1000

Immunohistochemistry: 1:50-1:200

## Images



Gel: 6%SDS-PAGE

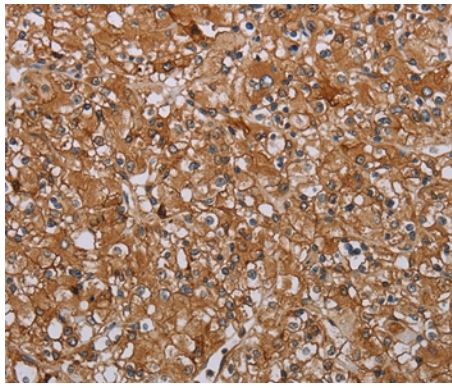
Lysates (from left to right): NIH/3T3 and LoVo cell

Amount of lysate: 40ug per lane

Primary antibody: 1/500 dilution

Secondary antibody dilution: 1/8000

Exposure time: 3 minutes



Immunohistochemical analysis of paraffin-embedded Human prostate cancer tissue using #37728 at dilution 1/35.

## Background

This gene encodes one of the SERCA Ca<sup>2+</sup>-ATPases, which are intracellular pumps located in the sarcoplasmic or endoplasmic reticula of muscle cells. This enzyme catalyzes the hydrolysis of ATP coupled with the translocation of calcium from the cytosol to the sarcoplasmic reticulum lumen, and is involved in muscular excitation and contraction. Mutations in this gene cause some autosomal recessive forms of Brody disease, characterized by increasing impairment of muscular relaxation during exercise. Alternative splicing results in three transcript variants encoding different isoforms.?

Note: This product is for in vitro research use only